



The Byword



9th January 2026

www.bygrove.org.uk

@bygrove_primary

Key Dates

- Monday 12th January 2026: Y5 start weekly swimming
- Friday 16th January 2026: Fluoride varnish programme for YN/R/1
- Wednesday 21st – Friday 23rd January: Y5 & Y6 residential trip to Fairplay House
- Tuesday 10th February 2026: Y4 sleepover parents meeting
- Wednesday 11th February 2026: Y2/3 show for parents at 2pm
- Friday 13th February 2026: Last day of term - 3:30pm finish
- Monday 16th – Friday 20th February 2026: Half term holidays
- Monday 23rd February 2026: INSET DAY - School closed**
- Tuesday 24th February 2026: All children return back to school
- Friday 27th February 2026: Parent Have your Say Conference 2026 at 9:15am, Main Hall

Dear Parents and Carers,

Welcome back! I hope you all had a wonderful New Year and a restful festive break with your loved ones. It has been a pleasure to see the children's smiling faces return to the Bygrove corridors this week, full of stories and energy for the term ahead. We are looking forward to a spring term packed with high-quality teaching, deep learning opportunities and rich experiences for every child.

This week, Isha and I carried out a Behaviour and Attitudes learning walk across the entire school. We were incredibly impressed by how quickly the children have settled back into their routines. From Early Years to Year 6, the learning atmosphere was calm, focused and purposeful.

The excellent behaviour we witnessed is a testament to the hard work and skill of our staff, who work tirelessly to provide the best possible provision for every child. I would like to start the term by saying a huge thank you to Team Bygrove! Looking ahead to next week, Isha and I will be continuing our focus on excellence by looking closely at reading across the school.

Over the next few weeks, I would like to use The Byword to shine a spotlight on our excellent inclusive provision and the dedicated team behind the scenes. This level of specialist support isn't available in all schools - especially in smaller schools like ours. I am eager to share more with you about what makes our provision so special and how it ensures every child at Bygrove can thrive.

Finally, preparations are well underway for the highly anticipated Year 5 and Year 6 residential trip to Fairplay House. The excitement is definitely building among both pupils and staff!

This will be a brilliant three days of fun and adventure, but it is also a vital part of our curriculum for our children's futures. These trips allow children to develop essential life skills - independence, resilience and teamwork - that prepare them for a successful future beyond our school gates.

Wishing you all a wonderful, restful weekend.

Warm regards,

Fiona





Attendance

Our aim is to promote high attendance so that our pupils achieve well at school. Regular attendance and punctuality is also crucial for making friends and developing good relationships.

 **Exceptional!**
100%

 **Very Good**
97% - 99%

 **Potential to improve**
91% - 96%

 **Needs to improve**
90% & below

Our whole school attendance target for this year:
97.00%

Attendance for the week beginning Monday 15th December 2025 - Friday 19th December 2025 (Rec-Y6):
90.05%

| Year | Attendance |
|-----------|------------|
| Nursery | 86.70% |
| Reception | 91.33% |
| Year 1 | 93.33% |
| Year 2 | 91.72% |
| Year 3 | 93.67% |
| Year 4 | 87.00% |
| Year 5 | 78.97% |
| Year 6 | 94.29% |

Last week's attendance

Y6: 94.29%

Well done Y6!

Paper copies of the Byword are available from the office.

After School Clubs

We are excited to launch our club provision for the spring term, which will begin on Tuesday 6th January 2026. Ad-Hoc Clubhouse sessions and Breakfast Club will also be starting from Tuesday 6th January 2026.

The clubs will be live on ParentPay by 3pm on Friday 19th December 2025! To sign up, please log on to your [ParentPay](#) accounts.

The clubs available will be:

After School Clubs - Spring 2026

Each club costs **£19.50 for the term**. The price for the Cooking Club is **£22.00** due to the sessions being longer and the additional resources required. Breakfast Club will cost **£1.00 per day** and Ad-Hoc Clubhouse sessions will cost **£2.50 per day**.

| Mondays | | | |
|--------------------------------------|------------------|-------------|---------------------|
| Clubhouse | Nursery - Year 6 | 3:45 - 5:30 | All welcome |
| Tuesdays | | | |
| Clubhouse | Nursery - Year 6 | 3:45 - 5:30 | All welcome |
| Phase 2 Football Club | Years 4 - Year 6 | 3:45 - 4:45 | 12 spaces remaining |
| Wednesdays | | | |
| Clubhouse | Nursery - Year 6 | 3:45 - 5:30 | All welcome |
| Phase 1 Football Club | Year 1 - Year 3 | 3:45 - 4:45 | 17 spaces remaining |
| Thursdays | | | |
| Clubhouse | Nursery - Year 6 | 3:45 - 5:30 | All welcome |
| Cooking Club (£22 per term) | Years 1 - Year 6 | 3:45 - 5:00 | 3 spaces remaining |
| Fridays | | | |
| Clubhouse | Nursery - Year 6 | 3:45 - 5:30 | All welcome |

LANGUAGE ANGELS



This week's word is:

"Avión"– which means **"Airplane"**

Try using it at home and in school!

Bygrove WhatsApp Channel



We are delighted to introduce to you our official Bygrove WhatsApp Channel!

To join the channel, simply click on the link below or scan the QR code:
<https://whatsapp.com/channel/0029VbC1wNm2phHULqkpU33p>

Weather appropriate clothing



As the weather continues to get colder, we kindly ask that you ensure your child comes to school dressed appropriately for the cold.

This can include: extra layers, a coat, hat and gloves. We want all children to stay comfortable and safe especially during time spent outdoors.

Please ensure all clothing is clearly labeled with your child's name.



Stars Of The Week

Year 1

Samah

Year 2

Hana

Year 3

Whole class

Year 4

Osman

Year 5

Zafiya

Year 6

Lorin

HANDWRITING HEROES

YEAR 1: ISHAQUE

YEAR 2: YAMIN

YEAR 3: JUMANA

YEAR 4: FARHA

YEAR 5: KHADEEJA

YEAR 6: AHMED





Mathematics

MATHLETICS WINNERS

1ST: Y6 - 24,352 POINTS

2ND: Y2 - 19,646 POINTS

3RD: Y3 - 10,101 POINTS

**TOP STUDENT AT BYGROVE
THIS WEEK:**

**ZAID - Y1
6,850 POINTS**

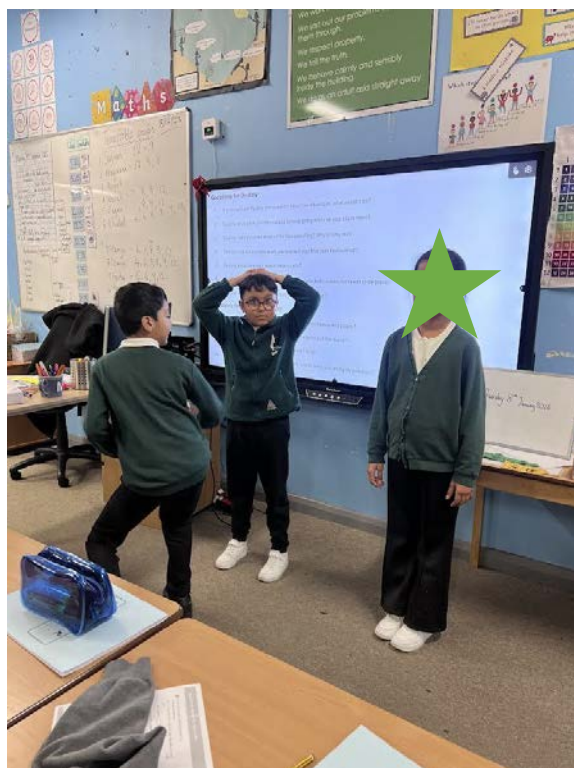
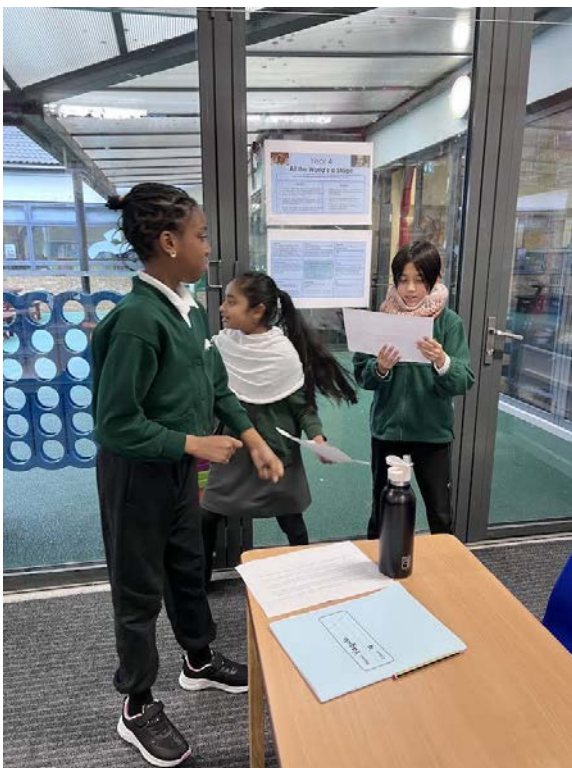
Year 1

In PSHE, Year 1 have started looking at dreams and goals. They had the opportunity to think about and share their goals with the class and thought about the steps to achieve them.

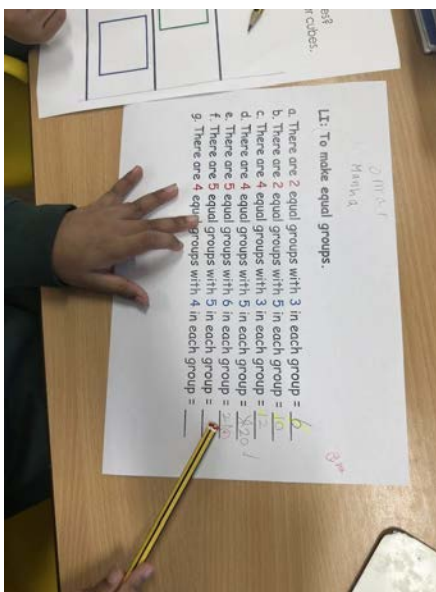
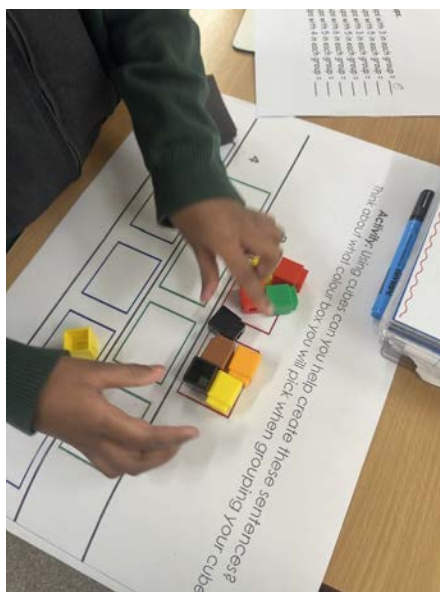
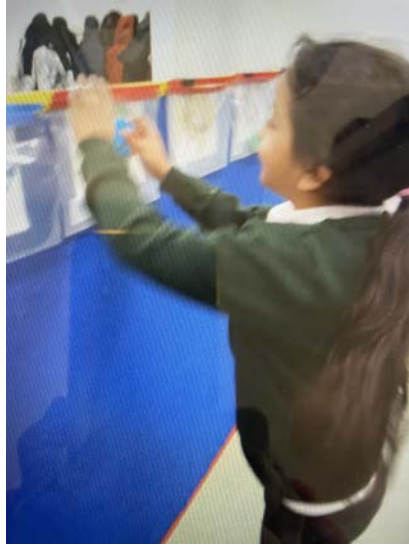


Year 4

Using drama to deepen their understanding, Year 4 transformed into news reporters this week, interviewing characters from their model text, *The Scorpion King*. Their insightful questions showed just how thoughtfully they are engaging with the text as they explored characters' motives, emotions and key events. By stepping into different roles, pupils brought the story to life and developed their speaking and listening skills in an exciting and memorable way.

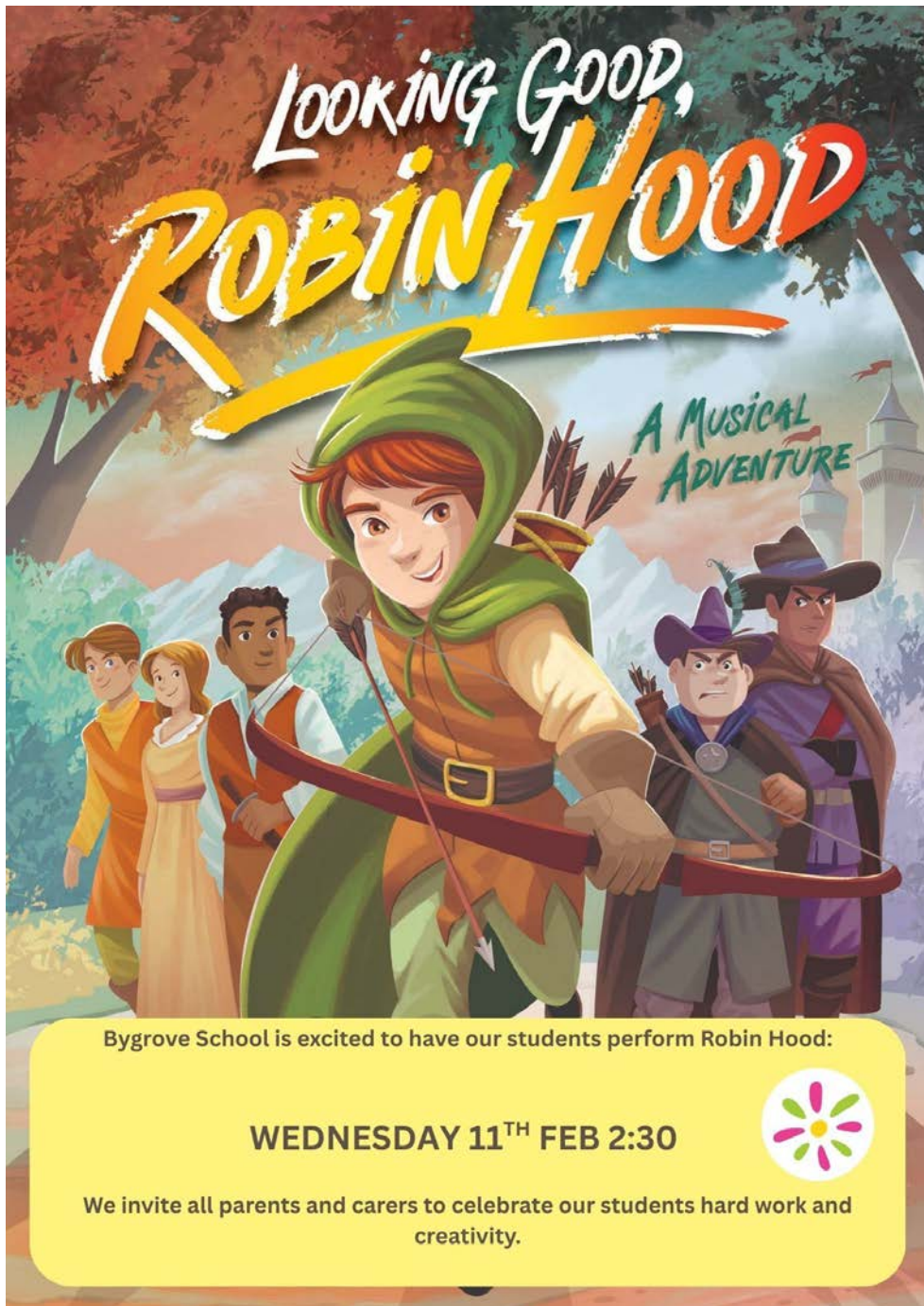


The children in the SLS went fishing for numbers this week using their fishing nets. They then had to use their number matching skills to match the number to the correct envelope.



Year 2

Year 2 have started the spring term with their mathematical hats on - collaborating with their talk partners to create equal groups when learning all about multiplication.



Bygrove School is excited to have our students perform Robin Hood:

WEDNESDAY 11TH FEB 2:30



We invite all parents and carers to celebrate our students hard work and creativity.

Bygrove is excited to showcase "Robin Hood" for our community and parents, featuring our talented children from Year 2 and Year 3.

The performance is scheduled as follows:
Wednesday 11th February at 2:30pm

We invite all parents and carers to join us in celebrating the hard work and creativity of our pupils. We are sure it will be an entertaining and memorable experience for everyone involved!



SSF DATE!

Thank you for your patience regarding the wait for this year's SSF date. Our usual theatre (Greenwich) pulled out of hosting the programme for reasons outside of our control and Shakespeare Schools Foundation is currently in the process of finding us a new convenient date and theatre that works for us! The date will not be during Ramadan and we will make sure you all have plenty of notice. Thank you for your continuous support!

YEAR 4 SSF
DATE TBC



Social Connect Groups



In Tower Hamlets, the NHS and Children and Family Centres and Family Hubs are working together to help children with **'social communication differences'** (SCD) or autism.

SCD stands for **'social communication differences'**. This is when people have differences in the way they interact with other people. Children with SCD might need help communicating, joining in, and managing their feelings. Some people with SCD have a diagnosis of autism, but others don't.

- There are different groups you can join, depending on what you and your child's goals are. In these groups, you will learn strategies to help your child to develop in their every day activities.
- You can attend these groups in any order. Together with a professional, you can decide which group you think is best for you.
- Some of our groups are online (you join from home using your phone or computer) and some are 'in-person' groups (you go to the children's centre).
- To join the **online** groups, sign yourself up on our Eventbrite website! Click this link: <https://www.eventbrite.co.uk/o/barts-young-health-childrens-therapies-75042212983>
- Or scan this code using the camera on your phone...



- If you want to join the **in-person** groups, ask your nearest Children and Family Centre.



Explore and Connect is a stay and play for children with SCD. There are fewer children than the universal stay and play groups. You can play with your child and connect with other parents. You can also speak to staff who can give you ideas and tips.

To join:
ask your nearest Children and Family Centre or speak to a professional



Explore and Connect:
Stay and Play

Learn and Connect:
Parent Group



Learn and Connect is Speech and Language Therapy and Occupational Therapy for your child. The course is designed to help you to help your child develop every day. Delivered by experts (speech and language therapists and occupational therapists) you will learn through discussion and videos: what SCD is, how your child learns, how to develop your child's communication, how to help your child learn to do every day activities (e.g. getting dressed, brushing teeth).

You can choose to attend a group online or in-person at the Children and Family Centres. This is a group for parents only. **For in-person groups, there will be a creche where you child can be looked after.** Every group is 1.5 hours, and the course is 6 weeks long.

To sign up:

Online: Scan the QR code with your phone camera/follow the link
In-person: ask your nearest Children and Family Centre or speak to a professional

Learn new ways to help your child with their communication and taking part in everyday activities. You will try the ideas and activities with your child, while Early Intervention Workers support you. Each week is 1.5 hours long and it takes 6 weeks. This a group for you **and** your child - you will learn together!

To join: ask your nearest Children and Family Centre or speak to a professional.

Play and Connect:
Parent and Child Group



If you need a group in another language, or need help joining

please ask your nearest Children and Family Centre, ask a health professional or email us
bartshealth.socialconnect@nhs.net

To sign up to online groups, visit the link below or scan the QR code

<https://www.eventbrite.co.uk/o/barts-young-health-childrens-therapies-75042212983>





TARGETED YOUTH SUPPORT (TYS) WORKSHOP SERIES 1/4

Substance Misuse Awareness for Parents

As part of our ongoing work with families, Targeted Youth Support has developed a series of practical workshops.

Join us for an engaging and interactive workshop on substance misuse awareness. This session is designed to empower parents with the knowledge, tools and confidence to support young people who may be affected by substance misuse.

Learn about the signs to look out for, how to have supportive conversations, build resilience within your family, and discover the range of local support services available for in Tower Hamlets. Together we can help our young people make safer, healthier choices for a brighter future.

Tuesday 20th January
12:30-2:30pm

This session will be held at the Tower Hamlets Town Hall, 160 Whitechapel Road, London, E1 1BJ.

For more information about this workshop, or about Targeted Youth Support, please get in touch via e-mail: targetedyouthsupport@towerhamlets.gov.uk.



**Scan the QR code
to get signed up**





TARGETED YOUTH SUPPORT (TYS) WORKSHOP SERIES 2/4

Understanding Emotional Based School Avoidance: A Parent's Guide

As part of our ongoing work with families, Targeted Youth Support has developed a series of practical workshops.

This supportive workshop is designed to help parents make sense of why some children struggle to attend school. We will look at the emotions behind avoidance, share real-life examples, and discuss effective ways to encourage your child back into school life. You will leave with practical tools and reassurance that small consistent steps can make a big difference.

**Thursday 29th January
12:30-2:30pm**

This session will be held at the Tower Hamlets Town Hall, 160 Whitechapel Road, London, E1 1BJ.

For more information about this workshop, or about Targeted Youth Support, please get in touch via e-mail: targetedyouthsupport@towerhamlets.gov.uk.



**Scan the QR code
to get signed up**





TARGETED YOUTH SUPPORT (TYS) WORKSHOP SERIES 3/4

Understanding Online Harm

As part of our ongoing work with families, Targeted Youth Support has developed a series of practical workshops.

In today's digital world, online spaces can be both empowering and challenging. This interactive workshop explores the real impacts of online harm from recognising the signs to learning practical tools to stay safe, manage online interactions, and build digital resilience.

Empower yourself with the knowledge and confidence to navigate and support your family online safely and responsibly.

Wednesday 4th February
12:30-2:30pm

This session will be held at the Tower Hamlets Town Hall, 160 Whitechapel Road, London, E1 1BJ.

For more information about this workshop, or about Targeted Youth Support, please get in touch via e-mail: targetedyouthsupport@towerhamlets.gov.uk.



**Scan the QR code
to get signed up**



TARGETED YOUTH SUPPORT (TYS) WORKSHOP SERIES 4/4

Stronger Together: How Connected Families Support Child Mental Health

As part of our ongoing work with families, Targeted Youth Support has developed a series of practical workshops.

Join us for a workshop designed for parents of adolescents. This session will offer an accessible overview of how the teenage brain develops and how those changes can affect emotions, behaviour, and family dynamics.

We'll explore the vital role strong family connections play in supporting mental wellbeing, and share practical communication strategies, to help deepen understanding and build trust.

The workshop will also unpack the difference between control and connection, showing how nurturing relationships can foster resilience during adolescence.

Monday 9th February
12:30-2:30pm

This session will be held at the Tower Hamlets Town Hall, 160 Whitechapel Road, London, E1 1BJ.

For more information about this workshop, or about Targeted Youth Support, please get in touch via e-mail: targetedyouthsupport@towerhamlets.gov.uk



**Scan the QR
code to get
signed up**



Bygrove Pupil Vacancies



Did you know we have pupil vacancies at Bygrove? If you have a child or know someone who might be interested, please apply, share and join our waiting list!

| | |
|---|---|
| Nursery admissions 2026 For children born between 1 September 2022 and 31 August 2023 | 52 spaces available for 2026/27 apply online via the eadmissions portal |
| Reception admissions 2026 For children born between 1 September 2021 and 31 August 2022 | 30 spaces available for 2026/27 apply online via the eadmissions portal |
| Nursery admissions 2025 For children born between 1 September 2021 and 31 August 2022 | 2 spaces available for 2025/26 apply online via the Parent Portal |
| Current Year 2 admissions For children born between 1 September 2018 and 31 August 2019 | 2 spaces available! Apply via the Parent Portal |
| Current Year 5 admissions For children born between 1 September 2015 and 31 August 2016 | 1 space available! Apply via the Parent Portal |
| Current Year 6 admissions For children born between 1 September 2014 and 31 August 2015 | 2 spaces available! Apply via the Parent Portal |

If we are currently full in other year groups, please still apply to join our waiting list via the [Parent Portal](#). For more information about in-year admissions visit [LBTH in-year admissions](#).

For more information about all admissions in Tower Hamlets visit [LBTH school admissions](#).

Contact the admissions service directly for more information

Email: school.admissions@towerhamlets.gov.uk

Telephone: 020 7364 5006

Late applications will be accepted so please apply now and share with family and friends!

We also offer places to rising 3-year-olds to start nursery a term after turning 3 years old. Please spread the word and tell them to apply ASAP! They can apply via: the [Parent Portal](#)



NURSERY

Places Available!

Do you have or know someone with a child born between 1 September 2021 and 31 August 2022?

Apply now via the [Parent Portal](#)

They can start with us in September 2025



DID YOU KNOW?

We also offer places to rising 3-year-olds to start nursery a term after turning 3 years old! They can start in January 2026 or April 2026.

Please contact the school office on 020 7538 4925 or email admin@bygrove.org.uk

Click the link below for more information

[Nursery admissions 2025](#)