

Year Group 4
Summer

By the end of this unit:

You will be able to recall the impact of natural disasters on the Mayan Civilization

How will you be using your history skills?

You will use your enquiry skills to find out about the drought that impacted the Mayan civilisation.

You will use your enquiry skills to look at primary and secondary resources.

You will look at sources such as artefacts, pictures and videos to help you do this.

What have I learnt already

You have learnt about the Mayan Civilisation in Year 3.

Knowledge Organiser: History

Theme: Mighty Mountains

Key knowledge that will be learnt:

Recall facts about the Mayan civilisation from year 3



The most severe drought of the past 7,000 years devastated the Yucatan Peninsula. Large Mayan cities collapsed in four phases of abandonment spaced about fifty years apart around a.d. 760, 810, 860, and 910.

How can we prepare for / prevent natural disasters?

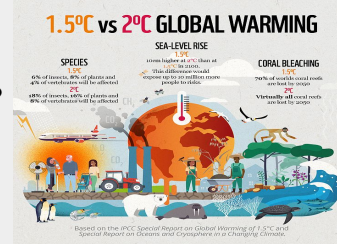
Being informed about the possible natural disaster risks, planning for these and staying informed about them are ways we can prepare for and prevent natural disasters.

Learning about the way natural disasters impacted past civilisations can help prepare us to protect our present and future.

What are the climate risks for present day?

Global warming, rising water levels and loss of different species (both land and sea) are current risks.

Evolution of Maya culture	
Olmec	1200-1000 B.C.
Early Preclassic Maya	1800-900 B.C.
Middle Preclassic Maya	900-300 B.C.
Late Preclassic Maya	300 B.C. - A.D. 250
Early Classic Maya	A.D. 250-600
Late Classic Maya	A.D. 600-900
Post Classic Maya	A.D. 900-1500
Colonial period	A.D. 1500-1800
Independent Mexico	A.D. 1821 to the present



Key Vocabulary:

civilisation	A group of people with their own language and way of life,
expedition	a journey or trip taken for a reason
pioneer	someone who is the first to develop something
conservation	protecting our environment and the wildlife that lives in it
drought	where there is a shortage of rain over a long period of time
natural disaster	caused by nature e.g tornadoes, ice storms, severe weather or flooding

