

**Year Group 4**  
Spring

**Knowledge Organiser: Art & Design**

**Theme:** All the World's a Stage



**Strands:**

Drawing  
Painting

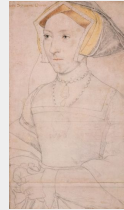
**What have I learnt already?**

In KS1 you learnt that primary colours can be mixed to create secondary colours.

That artists manipulate their brush strokes for different effects.

**Key knowledge that will be learnt:**

The work & approach of a significant artist called Holbein, and the importance of portraiture in Tudor times to illustrate the status of people during this period



Looking closely at Tudor dress and possessions in portraits can tell us about that person's power & character.



Artists often use tints and shades when mixing colours to create dimension.

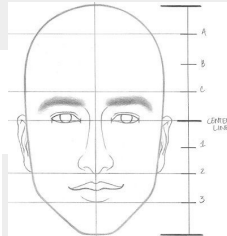
**TINTS**

add white



**SHADES**

add black



**Key Vocabulary:**

tone	The lightness or darkness of something
tint	Created by adding white to a colour to make it lighter
shade	Created by adding black to a colour to make it darker
pattern	An arrangement of lines, shapes or colours
impasto	An area of thick paint or texture in a painting
proportion	The size relationship between two or more elements in an artwork