



The Byword



8th November 2024

www.bygrove.org.uk

@bygrove_primary

Dear Parents & Carers,

Key Dates

- Monday 11th November: EYFS Open Day
- Friday 15th November: Friendship Week Sharing Assembly - **Starts at 9:15**
- Friday 29th November: Christmas Decoration Day
- Friday 13th December: Panto at 2pm
- Monday 27th January: EYFS Open Day

Thank you very much to all of our parents who attended the parent consultations this week. Our teachers really value meeting with you to discuss your child's learning and we hope that you found this useful too. Strong partnerships with parents are key for the children's success so we appreciate you taking the time to come into school to work closely with us. If you weren't able to attend this week, please speak to your child's class teacher to arrange another appointment.

As part of our Healthy Schools status & to support our children who have food allergies or intolerances, we can have healthy birthday treats when celebrating in school. Fruit, fruit platters or fruit kebabs will be accepted. This is to promote healthy eating and to keep all children safe. We are not able to accept sweet treats but are happy to celebrate birthdays with a song!

Wishing you all a lovely weekend,

Fiona Durnian
Headteacher



Attendance

Our aim is to promote high attendance so that our pupils achieve well at school. Regular attendance and punctuality is also crucial for making friends and developing good relationships.



Our whole school attendance target for this year: **97.00%**

Attendance for the whole year beginning Monday 21st October 2022 - Friday 25th October 2024 (Rec-Y6): **96.14%**

Year	Attendance
Nursery	94.69%
Reception	97.42%
Year 1	96%
Year 2	95.33%
Year 3	93.10%
Year 4	97.24%
Year 5	95.17%
Year 6	98.62%

Last week's attendance

Y6: 98.62%

Well done Y6!



Stars Of The Week

Year 1

Inayah A

Year 2

Jumana & Arham

Year 3

Riyad

Year 4

Ali & Zayd

Year 5

Is-haaq

Year 6

Fariha

HANDWRITING HEROES

YEAR 1: BISMA

YEAR 2: AISHA

YEAR 3: SAFREEN

YEAR 4: TAYEBA

YEAR 5: SAMA

YEAR 6: EESA





Our Explorer Behaviours



Determination



Creativity



Confidence



Leadership



Kindness



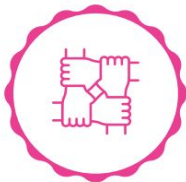
Curiosity



Citizenship



Fairness



Teamwork



Which Destination are you completing this half term?

Star Spotter - Focus Behaviours: Teamwork & Curiosity

Good Neighbour - Focus Behaviours: Kindness,

Citizenship & Teamwork

Crafter - Focus Behaviours: Creativity & Determination

Night Navigator - Focus Behaviours: Curiosity, Creativity & Confidence

Local Hero - Focus Behaviours: Citizenship & Teamwork

Legacy Makers - Focus Behaviours: Citizenship & Creativity



We cannot wait to get started!



Explorers

Explorers is back! The children have had a chance to get to know their new families and will start their Autumn term destinations.

Here is a reminder of the

Bygrove Families:

Pacific Explorers

Mount Everest Explorers

Milky Way Explorers

Volcanic Explorers

Inca Explorers &

Antarctica Explorers

Ask your child which Family they belong to!

Each **Family** will begin a new **Destination** which they will complete over the next four weeks.

Each Destination has a focus on chosen **Behaviours**.

Please ask your children which Destination they are completing and how they can get better at these Behaviours this half term.

School Photographs

YOU'RE NOT TOO LATE!

You have unfortunately missed the opportunity for free school delivery, but you can still order your photographs for delivery to home by following the instruction on the cards that was sent home this week.



Friendship Week

All parents are invited to attend our Friendship Week Sharing Assembly on Friday 15th November from 9.15-9.30am.

Nursery, Reception and the SLS will have two members of the class as representatives to share their learning in the assembly.



Bygrove Parent Consultations

Date	Year Group	Location
Monday 11th November	Year 3	Leadership Room
Tuesday 12th November	Year 6	Leadership Room
Wednesday 13th November	Reception	Leadership Room
Thursday 14th November	Year 5	Leadership Room

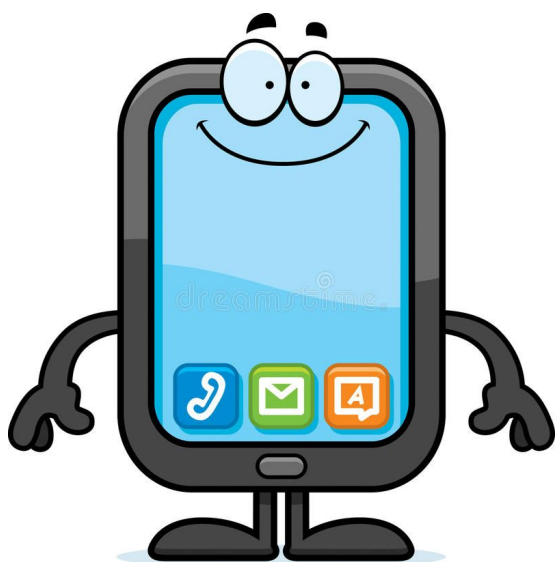
Pupil Absences

Please make sure that your emergency contact numbers are up to date.

The school telephone number is:
020 7538 4925

If your child is absent, please call the school office by
9:00am.

If your child attends our Nursery afternoon session please call the school office by 12:30pm.





Is my child too ill for school?

Yes, they should be absent from school with the below, until...

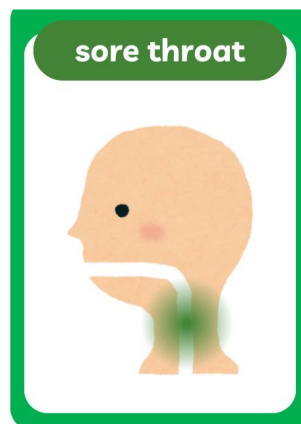


- **Chickenpox:** at least 5 days from the onset of the rash and until all blisters have crusted over
- **Diarrhoea and vomiting:** 48 hours after their last episode
- **Impetigo:** their sores have crusted and healed, or 48 hours after they started antibiotics
- **Measles:** 4 days after the rash first appeared
- **Mumps:** 5 days after the swelling started
- **Scabies:** they've had their first treatment
- **Scarlet fever:** 24 hours after they began taking antibiotics
- **Whooping cough:** 48 hours after they started taking antibiotics

If you do keep your child at home, it's important to phone the school office on 020 7538 4925 on each day of absence to let us know that your child won't be in and why. Please call us by 9:00am & if your child attends our Nursery afternoon session, call the school office by 12:30pm.

No, they can attend school - but please let the school know about...

- Hand, foot and mouth
- Head lice
- Threadworms
- Glandular fever
- Tonsillitis
- Slapped cheek



If your child is well enough to go to school but has an infection that could be passed on, such as a cold sore or head lice, let their teacher know.

Remember: It's fine to send your child to school with a minor cough or common cold. For more information visit www.nhs.uk/live-well/is-my-child-too-ill-for-school

Reception have listened to the story of Rama and Sita to find out why Hindus celebrate Diwali. In class, we made Diva lamps to celebrate Diwali, the festival of light.

Reception



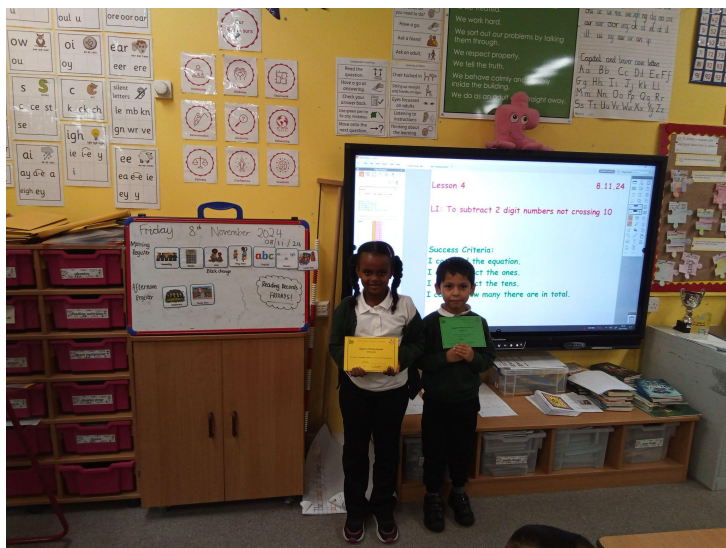
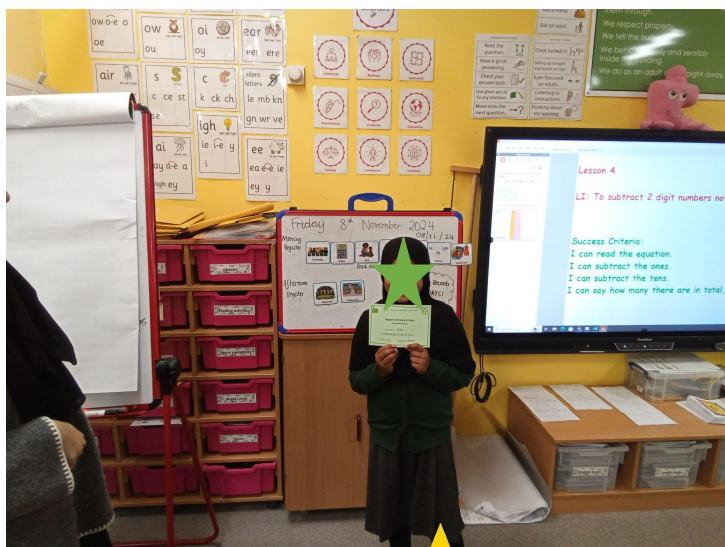
Reception

Reception are creating their own fireworks this week in the outdoor classroom. They have been changing the movement of their paint brushes to create different firework splashes.



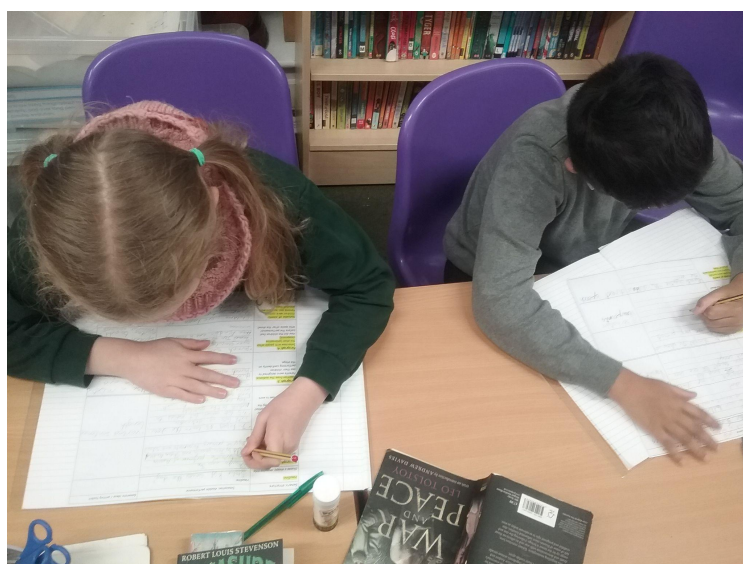
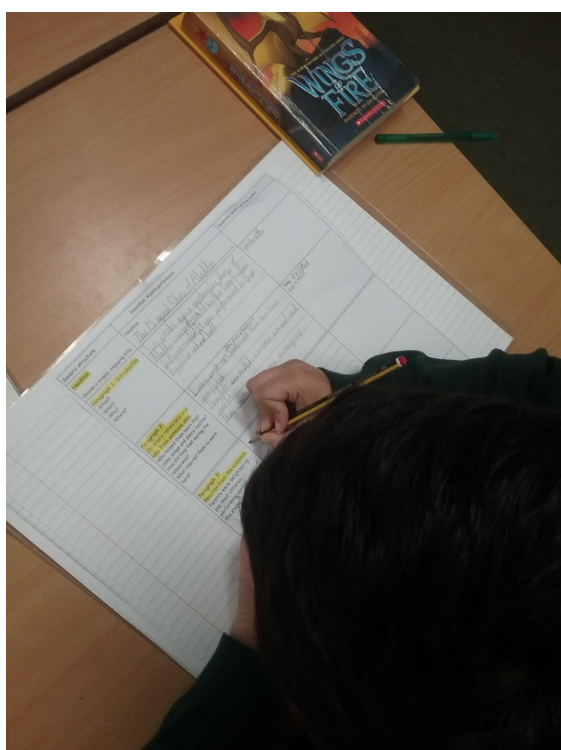
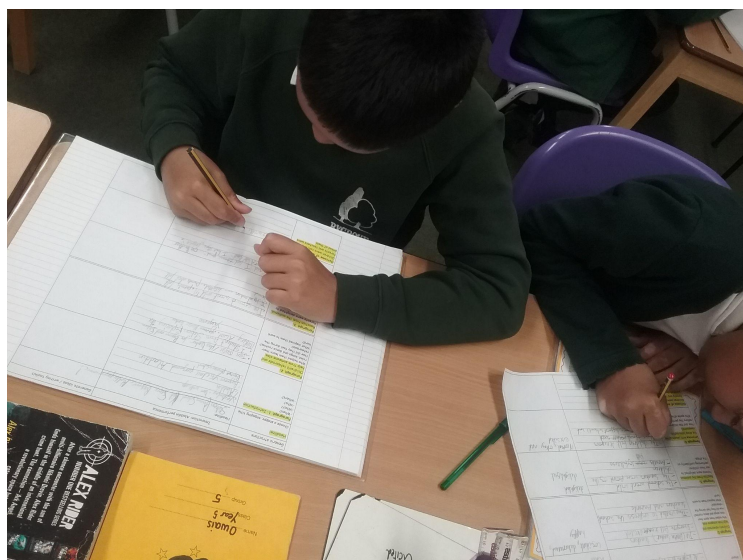
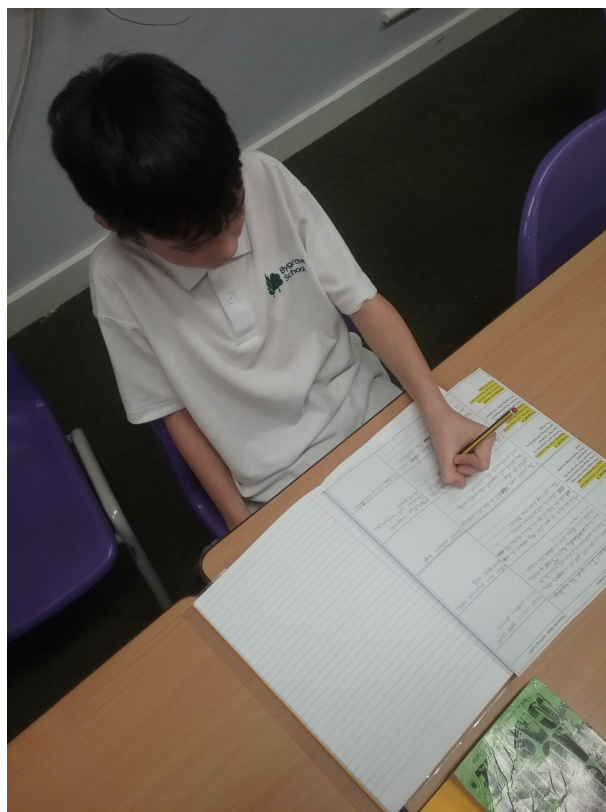
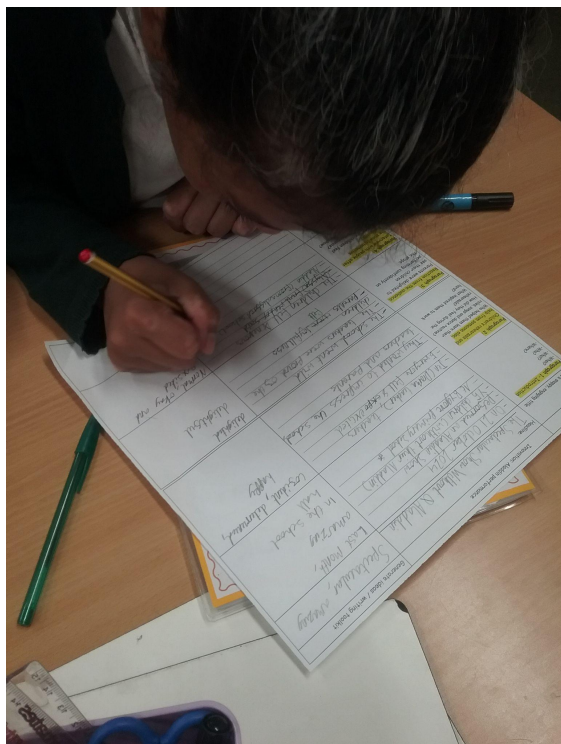
Year 2

Well done to the Year 2 stars of the week & the handwriting heroes.



Year 5

This week, year 5 have been working hard in english to plan their newspaper reports.



Year 6

This week, Y6 went to Leyton Orient Football Club for the 'Show Racism the Red Card' event. The children had a presentation by the charity, a workshop of stereotypes, a tour of the ground and a chance to meet players from the men's, women's and a academy sides



PRO VEG BRONZE AWARD



Pro Veg recognises that
OUR healthy menus are
environmentally friendly for
humans, animals and the Planet.

All our Vegan & Vegetarian
recipes are packed full of
nutrition including **PROTEIN**
& **FIBRE** to keep children
healthy & happy



Vegan



Vegetarian

Tesco Stronger Starts Grant

We have been accepted for the TESCO STRONGER STARTS GRANT!
You may have seen the boxes in store where customers get to vote
for their favourite cause with blue tokens!

The voting for our grant will commence in store from the first week in
October 2024 until Mid January 2025.

We have applied for £1500 to help us to promote healthy-after school
clubs & we need your help!

Our bid will be placed in the following Tesco Stores! If you shop in any
of these stores, please ask for a token & cast your vote for Bygrove!
THANK YOU!

2239 Canary Wharf Small unit E14 4QT
5430 Millharbour Iod Exp Small unit E14 9NA
5736 Limehouse Comm Rd Exp Small unit E14 7LW
5841 Poplar Hind St Lon Exp Small unit E14 9RL
5989 Bow Violet Rd Lon Exp Small unit E3 3QG
6005 Frances Wharf Lon Exp Small unit E14 7BY
6063 Baltimore Iod Exp Small unit E14 9RB
6289 South Plaza Iod Exp Small unit E14 9SH
6593 Marsh Wall Exp Small unit E14 9AB
6898 Isle Of Dog Manchester Exp Small unit E14 3NX

To check the location of any of the above stores, please go to the
Tesco website here: <http://www.tesco.com/store-locator/uk>

Once voting has concluded in store, votes will be collated during
Mid-January 2025 and you will be notified of the outcome of the
public vote after Mid February 2025. Please share this with family &
friends!

School applications are now open



Don't miss the deadlines for admission to secondary, primary and nursery schools.

Secondary admissions For children born between 1 September 2013 and 31 August 2014	31 October 2024
Primary admissions For children born between 1 September 2020 and 31 August 2021	15 January 2025
Nursery admissions For children born between 1 September 2021 and 31 August 2022	16 February 2026

Complete your application online at www.eadmissions.org.uk

For information about how to apply, scan the QR code or visit towerhamlets.gov.uk/schooladmissions

school.admissions@towerhamlets.gov.uk



What if I am not a Tower Hamlets resident but would like a place at a Tower Hamlets school?

You can submit an online application via the E-admissions website:
www.eadmissions.org.uk
naming Tower Hamlets schools.

What if my child has an Education, Health & Care Plan (EHCP)?

The application process is different for children with an EHCP and you do not apply online. Contact the SEN team for more information.

What if I apply late?

It's really important that you make your application before the closing date otherwise your application will not be considered until all on time applicants have received their outcomes and the school may then be full.

Is my child guaranteed a place at one of our preferred schools?

Most families will be offered a place at one of their preferred schools, but this cannot be guaranteed. When a school receives more applications than the number of places available, not all children can be admitted. Therefore, please fully consider the likelihood of your child getting a place at a preferred school before you make your application. **Only naming one school does not increase your chances of being offered the school.**

If my child is already in the school's nursery class, is there an automatic right to a place in the school's reception class?

When parents/carers apply for their children to start reception, no priority is given to children that attend the nursery of the school. The decision on whether a place can be offered will be made in accordance with the school's admission policy.

How will I be notified about the outcome of my application?

You will receive an email and a letter on National Offer Day.



SCAN ME



NURSERY

Places Available!

Do you have or know someone with a child born between 1 September 2021 and 31 August 2022?

Apply now via www.eadmissions.org.uk

They can start with us in September 2025



DID YOU
KNOW?

We also offer places to rising 3-year-olds to start nursery a term after turning 3 years old!

Please contact the school office on 020 7538 4925 or email admin@bygrove.org.uk

Click the link below for more information

[Nursery admissions 2025](#)

Hall Hire

Price: £60 per hour

£50 deposit required at booking and only refundable after the event.

Availability:

Most weekends and weekdays in the school holidays up until 10pm.
30 minutes before the event to set up - free of charge.

Facilities:

Car Park Space: 6 cars maximum.

X8 double tables with benches attached.

X40 chairs

Use of warming ovens but no cooking allowed.

Playground use up to 8pm (no high heels allowed on the soft surface).

Toilet facilities.

Speakers: laptop access to surround sound system.

No alcohol allowed.

Please let us know if you would like to hire out the hall for birthdays, Mehndi parties, family gatherings, Eid parties and other events.

Contact Christina Maynard to arrange a viewing via admin@bygrove.org.uk or call 0207 538 4925



The
Byword