



# We Belong At Bygrove

We would like to invite you to a  
celebration on Friday 20th  
September: We All Belong At  
Bygrove.

Starts at 2:30pm - 4pm

There will be a cultural food taster  
session, whole-school art activity,  
face painting & a Kahoot quiz to  
enjoy!

Children can wear cultural dress for  
the day.

BONJOUR

HELLO

Merhaba

GUTEN TAG

안녕하세요

SELAM KON'NICHIIWA CIAO



# After School Clubs: spaces are available!

Our club provision for the autumn term will begin on Wednesday 4th September 2024 including Ad-Hoc Club House sessions and Breakfast Club.

Please keep an eye for emails during the summer holidays because you will need to pay via ParentPay once the 2024-2025 clubs are ready.

The clubs available will be:

## Mondays

Club House	Nursery - Year 6	3:45 - 5:30	All welcome
Music Production	Years 2 - Year 6	3:45 - 4:45	<b>15</b> spaces remaining

## Tuesdays

Club House	Nursery - Year 6	3:45 - 5:30	All welcome
Phase 2 Football Club	Years 4 - Year 6	3:45 - 4:45	<b>12</b> spaces remaining

## Wednesdays

Club House	Nursery - Year 6	3:45 - 5:30	All welcome
Phase 1 Football Club	Year 1 - Year 3	3:45 - 4:45	<b>10</b> spaces remaining

## Thursdays

Club House	Nursery - Year 6	3:45 - 5:30	All welcome
Cooking Club ( <b>£21 per term</b> )	Years 1 - Year 6	3:45 - 5:00	<b>NO</b> spaces remaining



## Fridays

Club House	Nursery - Year 6	3:45 - 5:30	All welcome
------------	------------------	-------------	-------------

## Stars of the week



**Y1: Sayan & Maryam R**

**Y2: Mayameen**

**Y3: Iradat**

**Y4: Whan**

**Y5: Year 5 & Yahya**

**Y6: Ella**

## After School Clubs - Summer 2024

Each club costs **£18.50 for the term**. The price for the Cooking Club is **£21.00** due to the sessions being longer and the additional resources required. Breakfast Club will cost **£1.00 per day** and Ad-Hoc Club House sessions will cost **£2.00 per day**.



# HANDWRITING HEROES

YEAR 1: AVA

YEAR 2: TANHA

YEAR 3: NUAIM

YEAR 4: YAQUB

YEAR 5: TAQI

YEAR 6: QISMAT



# ParentPay Activation

Activate your ParentPay account to purchase your Christmas show tickets now and more!

Please contact the school office to get your username & password to activate your ParentPay account for your child.

ParentPay offers you the freedom to make payments whenever and wherever you like, 24 hours a day, 7 days a week - safe in the knowledge that the technology used is of the highest internet security available.

This is a more convenient way to pay for school meals, trips, clubs and other school items online, using a secure service called ParentPay. Once you have activated your account you can make online payments straight away.



## ParentPay

**DID YOU  
KNOW?**



### Payment in Advance

All payments should be made in advance on ParentPay.

- **Breakfast**
- **Ad-hoc Clubhouse**
  - **Trips**
  - **Lunches**

If you are having any difficulties or problems with ParentPay, please contact the office team or pop in to see

## Portrait Photos

On **Thursday 17th October**, children will be having their individual and siblings photos taken.



Please make sure your child comes in wearing their correct uniform.

## Pupil Absences

Please make sure that your emergency contact numbers are up to date.

The school telephone number is:  
020 7538 4925



## Pupil absences

If your child is absent, please call the school office by 9:00am.

If your child attends our Nursery afternoon session please call the school office by 12:30pm.

# Parent Welcome Meetings

Date	Time	Year Group	Location	Entry & Exit
Monday 16th September	3.00-3.30pm	Year 4	Year 4 Classroom	Front Office & Playground



## Reception

This week, Reception have continued to familiarise themselves with the Zones of Regulation colours. They have been thinking about how they are feeling and learning to talk to others about it. Talking is very therapeutic and helps us remove some of our worries!

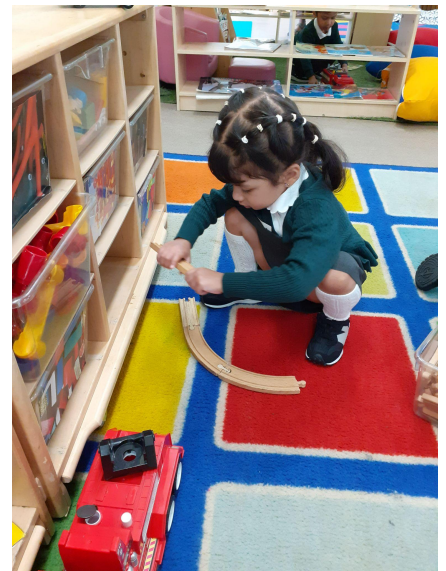
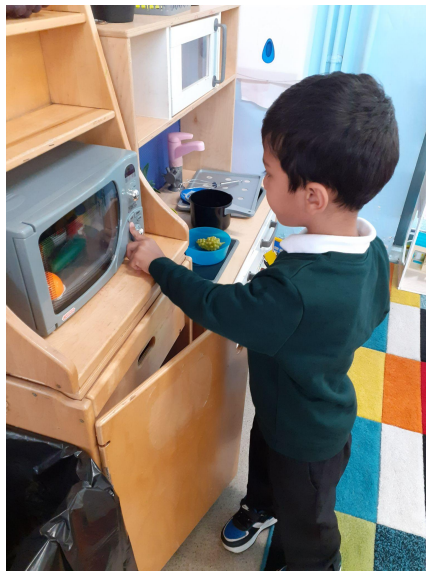
Reception also listened to different stories related to emotions this week to learn how they can help manage their own feelings. 'Ruby's Worry' & 'The Worry Monster' were a great hit in the class.



# Nursery

This week, Nursery continued to settle into our classroom.

We played with playdough, painted and sang some songs. We even made some new friends. We are so excited to learn with our new class!



# Art

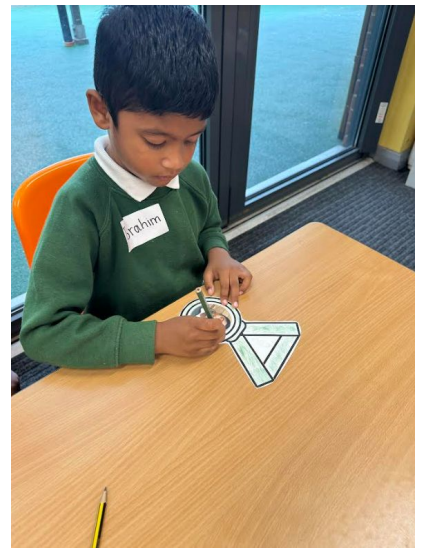
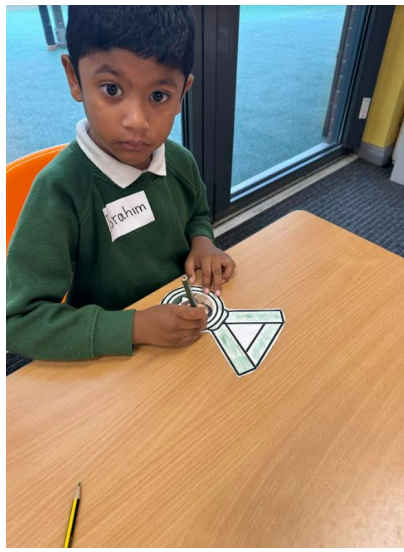
Feast your eyes on these marvellous portraits made by our Y1 & Y6 artists





# Year 1

Year 1 carried out research for their class name. They learnt their class is named after Kelly Holmes. They discovered that she was an inspirational athlete who never gave up and won two gold medals. The children were so inspired they made their own medals in honour of Kelly Holmes.



# Year 1

Year 1 have made an active start to the year. They have been thinking about how they can stay fit and healthy. One of the ways they have been doing their daily exercise is through Go Noodle. They love joining in with the dances and actions.



# Shakespeare Schools Festival

Friday 7th February  
2025

## SSF DATE 2025

### FRIDAY 7TH FEBRUARY

A date for your diaries Year 4 parents & carers!  
Next year's Year 4 Shakespeare Schools Festival  
performance date is Friday 7th Feb 2025 at The  
Greenwich Theatre. More info to come soon!

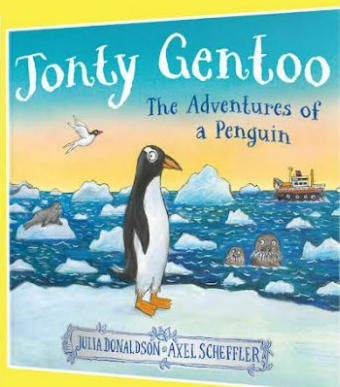
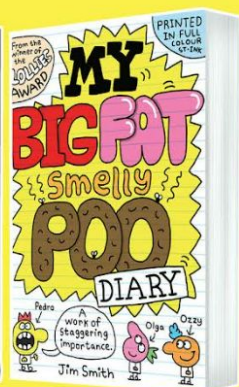
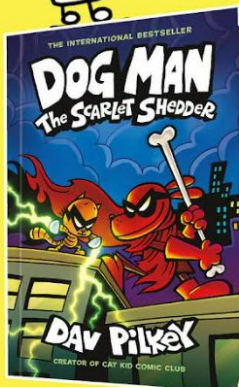
## Book Fair

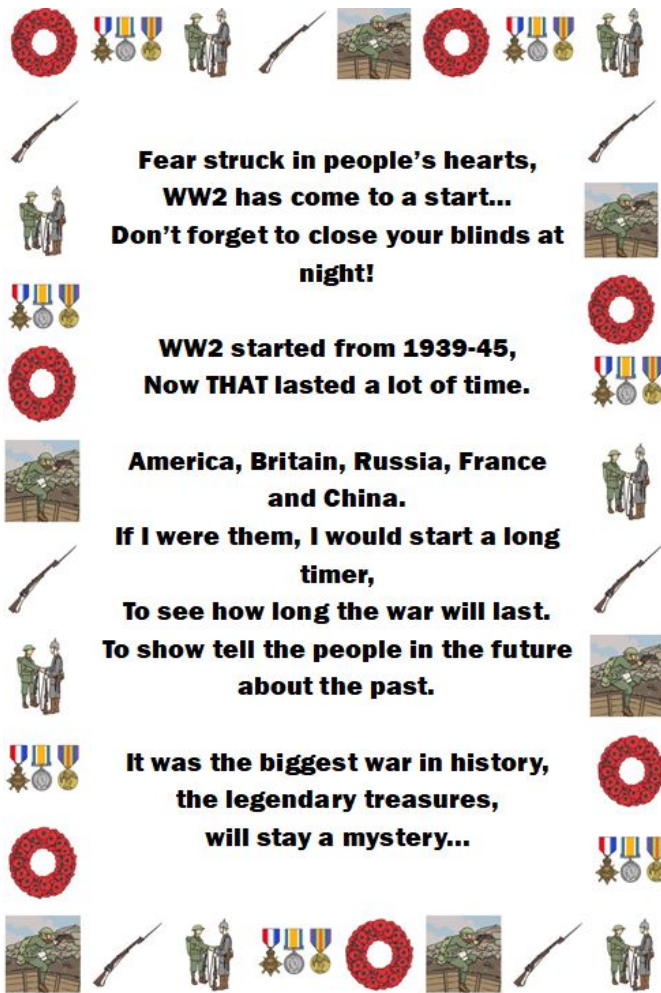
SCHOLASTIC TRAVELLING BOOKS

### COME to the

# BOOK FAIR

And earn  
**FREE**  
BOOKS  
for our  
school!





**Fear struck in people's hearts,  
WW2 has come to a start..  
Don't forget to close your blinds at  
night!**

**WW2 started from 1939-45,  
Now THAT lasted a lot of time.**

**America, Britain, Russia, France  
and China.  
If I were them, I would start a long  
timer,  
To see how long the war will last.  
To show tell the people in the future  
about the past.**

**It was the biggest war in history,  
the legendary treasures,  
will stay a mystery...**



Written By - Amanah Y6

## Phoenix Outreach Training

**Training flyer** – [Click here to view the training flyer.](#) We have now included the training for the whole year so you can plan ahead!

**Parent workshops** – [Click here to view the parent workshops for the year.](#) Please share with parents you think would be interested/benefit. [Click here to view the flyer for our LEAF course for Autumn Term](#) – please note, this course is now full but parents can apply to join the course in Spring Term.

**SCERTS training** – We are hosting Emily Rubin from SCERTS on 8<sup>th</sup> November to deliver a one-day training course. SCERTS is the framework that Tower Hamlets uses to set goals and identify appropriate supports for autistic pupils by EPS, SALT and Phoenix Outreach. [Click here for more details to book your place.](#) We have to charge for these places as we have paid for Emily Rubin to attend.

**Team Teach training** – if you would like to send any staff on accredited positive handling training, please send enquiries to [training@phoenix.towerhamlets.sch.uk](mailto:training@phoenix.towerhamlets.sch.uk) and we will contact you once the dates have been organised. This costs £150 for a two-day training per person.

# Tesco Stronger Starts Grant

We have been accepted for the TESCO STRONGER STARTS GRANT!  
You may have seen the boxes in store where customers get to vote  
for their favourite cause with blue tokens!

The voting for our grant will commence in store from the first week in  
October 2024 until Mid January 2025.

We have applied for £1500 to help us to promote healthy-after school  
clubs & we need your help!

Our bid will be placed in the following Tesco Stores! If you shop in any  
of these stores, please ask for a token & cast your vote for Bygrove!

THANK YOU!

2239 Canary Wharf Small unit E14 4QT  
5430 Millharbour Iod Exp Small unit E14 9NA  
5736 Limehouse Comm Rd Exp Small unit E14 7LW  
5841 Poplar Hind St Lon Exp Small unit E14 9RL  
5989 Bow Violet Rd Lon Exp Small unit E3 3QG  
6005 Frances Wharf Lon Exp Small unit E14 7BY  
6063 Baltimore Iod Exp Small unit E14 9RB  
6289 South Plaza Iod Exp Small unit E14 9SH  
6593 Marsh Wall Exp Small unit E14 9AB  
6898 Isle Of Dog Manchester Exp Small unit E14 3NX

To check the location of any of the above stores, please go to the  
Tesco website here: <http://www.tesco.com/store-locator/uk>

Once voting has concluded in store, votes will be collated during  
Mid-January 2025 and you will be notified of the outcome of the  
public vote after Mid February 2025. Please share this with family &  
friends!



# School applications are now open



Don't miss the deadlines for admission to secondary, primary and nursery schools.

<b>Secondary admissions</b> For children born between 1 September 2013 and 31 August 2014	<b>31 October 2024</b>
<b>Primary admissions</b> For children born between 1 September 2020 and 31 August 2021	<b>15 January 2025</b>
<b>Nursery admissions</b> For children born between 1 September 2021 and 31 August 2022	<b>16 February 2026</b>

Complete your application online at [www.eadmissions.org.uk](http://www.eadmissions.org.uk)

For information about how to apply, scan the QR code or visit [towerhamlets.gov.uk/schooladmissions](http://towerhamlets.gov.uk/schooladmissions)

[school.admissions@towerhamlets.gov.uk](mailto:school.admissions@towerhamlets.gov.uk)



### **What if I am not a Tower Hamlets resident but would like a place at a Tower Hamlets school?**

You can submit an online application via the E-admissions website: [www.eadmissions.org.uk](http://www.eadmissions.org.uk) naming Tower Hamlets schools.

### **What if my child has an Education, Health & Care Plan (EHCP)?**

The application process is different for children with an EHCP and you do not apply online. Contact the SEN team for more information.

### **What if I apply late?**

It's really important that you make your application before the closing date otherwise your application will not be considered until all on time applicants have received their outcomes and the school may then be full.

### **Is my child guaranteed a place at one of our preferred schools?**

Most families will be offered a place at one of their preferred schools, but this cannot be guaranteed. When a school receives more applications than the number of places available, not all children can be admitted. Therefore, please fully consider the likelihood of your child getting a place at a preferred school before you make your application. **Only naming one school does not increase your chances of being offered the school.**

### **If my child is already in the school's nursery class, is there an automatic right to a place in the school's reception class?**

When parents/carers apply for their children to start reception, no priority is given to children that attend the nursery of the school. The decision on whether a place can be offered will be made in accordance with the school's admission policy.

### **How will I be notified about the outcome of my application?**

You will receive an email and a letter on National Offer Day.



SCAN ME

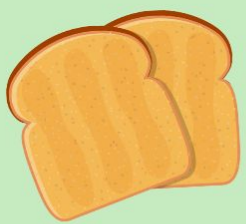
# BREAKFAST Club

From 7:45-8:45am  
£1 on ParentPay

## Breakfast club benefits:

- Positive start to the day
- Developing Independence
- Becomes part of their routine
- Improved behavior/results at School
- Allows children to have a healthy breakfast
- They socialise and make new friends

## Food we provide in Breakfast club:



Toast



Toastie



Fruit



Cereal



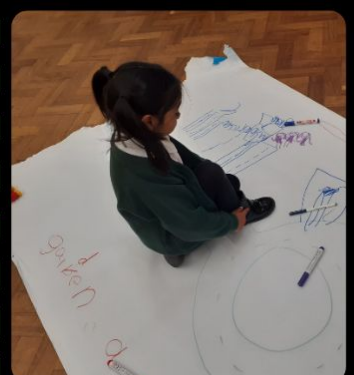
Milk



Juice



Porridge







# NURSERY

## Places Available!

Do you have or know someone with a child born between 1 September 2021 and 31 August 2022?

Apply now via [www.eadmissions.org.uk](http://www.eadmissions.org.uk)

They can start with us in September 2025



DID YOU KNOW?

We also offer places to rising 3-year-olds to start nursery a term after turning 3 years old!

Please contact the school office on 020 7538 4925 or email [admin@bygrove.org.uk](mailto:admin@bygrove.org.uk)

Click the link below for more information

[Nursery admissions 2025](#)

# Hall Hire

**Price: £60 per hour**

**£50 deposit required at booking and only refundable after the event.**

## **Availability:**

Most weekends and weekdays in the school holidays up until 10pm.  
30 minutes before the event to set up - free of charge.

## **Facilities:**

Car Park Space: 6 cars maximum.

X8 double tables with benches attached.

X40 chairs

Use of warming ovens but no cooking allowed.

Playground use up to 8pm (no high heels allowed on the soft surface).

Toilet facilities.

Speakers: laptop access to surround sound system.

No alcohol allowed.

Please let us know if you would like to hire out the hall for birthdays, Mehndi parties, family gatherings, Eid parties and other events.

Contact Christina Maynard to arrange a viewing via [admin@bygrove.org.uk](mailto:admin@bygrove.org.uk) or call 0207 538 4925



The  
**Byword**