



The Byword



2nd February 2024

www.bygrove.org.uk

@bygrove_primary

Key Dates

- Thursday 8th February: Parent 'have your say conference'
- Friday 9th February: INSET DAY - School closed
- Friday 9th February: Shakespeare School Festival Performance
- Monday 12th February - Friday 16th February: Half Term
- Monday 19th February: Parent Maths Workshop
- Monday 19th - Friday 1st March: Parent Consultations
- Friday 1st March: Year 4 Sleepover
- Thursday 7th March: World Book Day

Dear Parents & Carers,

This week Year 4 have been working really hard rehearsing their performance for the Shakespeare Schools Festival which takes place next Friday. We cannot wait to watch them perform on stage at the Greenwich Theatre to a packed audience. We know they will be fantastic!

Next week we have our annual Parent Have Your Say Conference on Thursday 8th February. This is an opportunity to have a cup of tea with our school governors & talk about what you think is going well at Bygrove & how you think we can all work together to make things even better! The conference will take place on Thursday 8th from 9.15am in the school hall. We really hope you can attend & are looking forward to hearing your ideas for the future.

Have a wonderful weekend,

Fiona

After School Clubs: spaces are available!

To sign up, please log on to your ParentPay accounts. Each club space is offered on a first come, first served basis.

Please contact the school office for help with ParentPay.

Mondays

Club House	Nursery - Year 6	3:45 - 5:30	All welcome
Music Production	Years 2 - Year 6	3:45 - 4:45	12 spaces remaining
Football Club	Reception - Year 2	3:45 - 4:45	13 spaces remaining

Tuesdays

Club House	Nursery - Year 6	3:45 - 5:30	All welcome
Football Club	Years 3 - Year 6	3:45 - 4:45	8 spaces remaining

Wednesdays

Club House	Nursery - Year 6	3:45 - 5:30	All welcome
Basketball Club	Year 3 - Year 6	3:45 - 4:45	11 spaces remaining

Thursdays

Club House	Nursery - Year 6	3:45 - 5:30	All welcome
Multi-Sports Club	Years 3 - Year 6	3:45 - 4:45	9 spaces remaining

Fridays

Club House	Nursery - Year 6	3:45 - 5:30	All welcome
Archery Club	Years 3 - Year 6	3:45 - 4:45	16 spaces remaining

Stars of the week



Y1: Alam

Y2: Arc-en-ciel

Y3: Sofia

Y4: Noah & Mahad

Y5: Afsheen

Attendance

Y2: 100%

Well done Y2!

After School Clubs - Spring 2024

Each club costs £17.50 for the term. Breakfast club £1.00 and Ad-Hoc Club Clubhouse sessions will cost £1.50 per day.

If you would like to make any changes with the club you have purchased, please let the office know by Monday 22nd January 2024.

Parent Consultations

Here are the dates for the parent consultations.

Date	Year Group	Location
Monday 19th February	Year 6	Learning Hub
Tuesday 20th February	Nursery	Learning Hub
Wednesday 21st February	Year 5	Library
Wednesday 21st February	Year 4	Learning Hub
Thursday 22nd February	Year 1	Learning Hub
Friday 23rd February	Reception	Learning Hub
Thursday 29th February	Year 2	Library
Thursday 29th February	Year 3	Learning Hub

Pupil absences

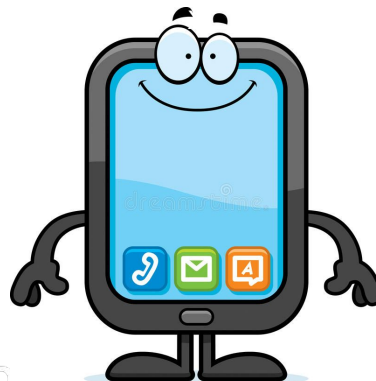
If your child is absent, please call the school office by 9:00am.

If your child attends our Nursery afternoon session please call the school office by 12:30pm.

Pupil Absences

Please make sure that your emergency contact numbers are up to date.

The school telephone number is:
020 7538 4925



Number Day 2024

We had an amazing time celebrating Number Day for the NSPCC! These are just a few of the outfits that children and adults wore to school.



Milky Way Explorers

The Milky Way Explorers had an amazing time exploring their local area with a visit to the St Mary's & St Joseph's Catholic church last Friday. We learnt all about how the church was built and the different people from all over Poplar who come to visit.



Coffee Morning

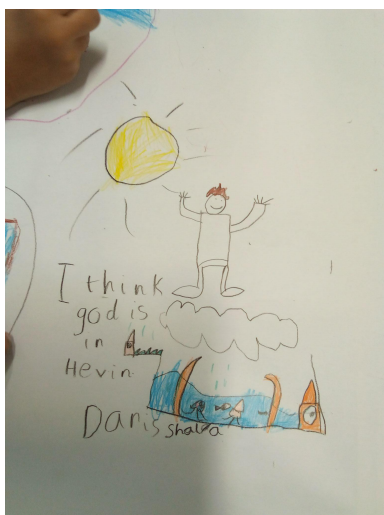
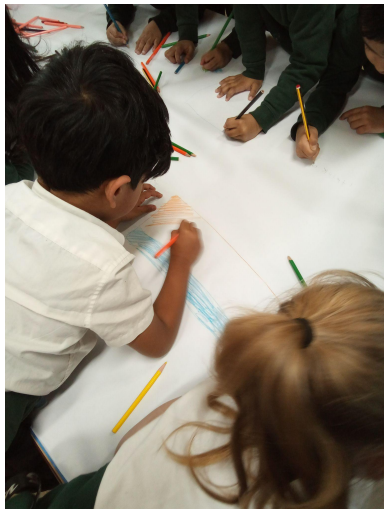
A big thank you to Claire for leading the coffee morning last week!



This week in Forest School...

Nursery had an amazing time in Forest School doing lots of activities such as; pond dipping, watering plants, climbing trees, finding small bugs & much more. Keep a look out for what they might find next time!





Year 1

Year 1 built on last term's learning about Islam to find out about Christian beliefs in God. We asked where Christians think God is and represented our ideas in a collaborative drawing. The children all listened respectfully to each others ideas in this lovely RE session.

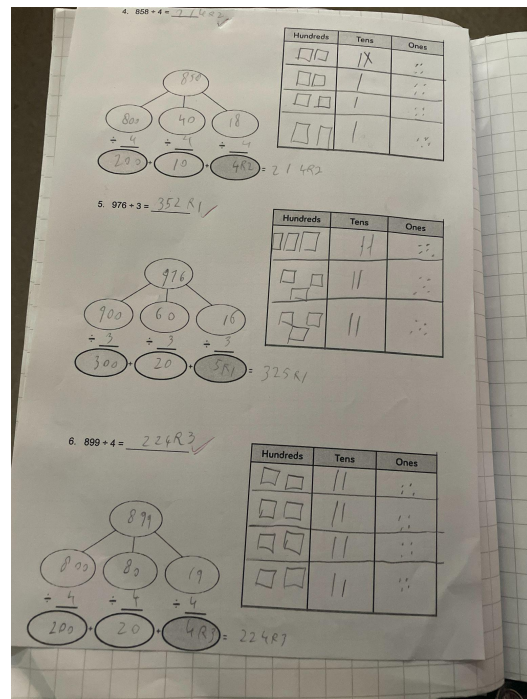
Year 2

Year 2 had an amazing time at the Sea Life aquarium! They explored the aquarium to learn about the different types of species that live in our world. This included learning about the features, habitats and diets of different types of fish.



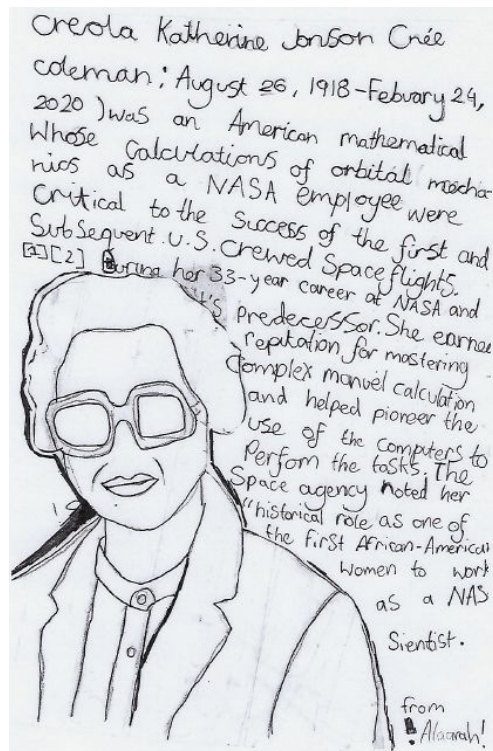
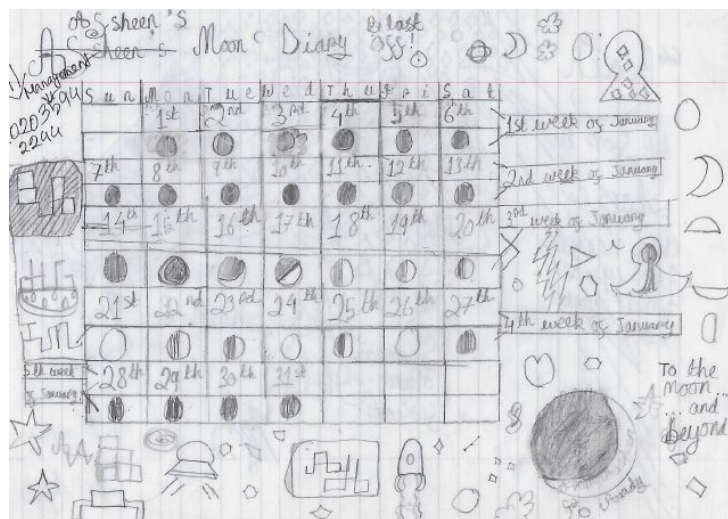
Year 4

Year 4 have been learning about division using place value charts and the part whole model. Mahad has shown great confidence and enthusiasm in his learning!



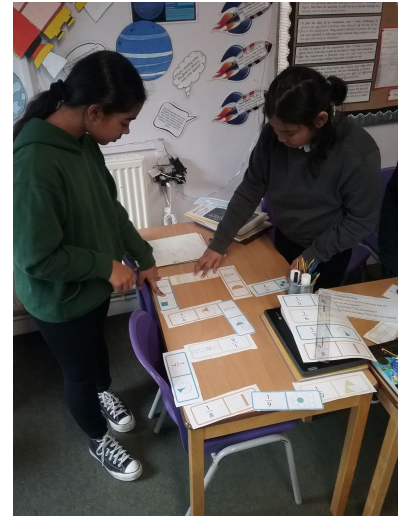
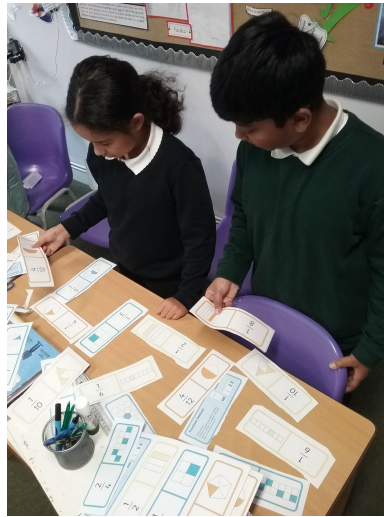
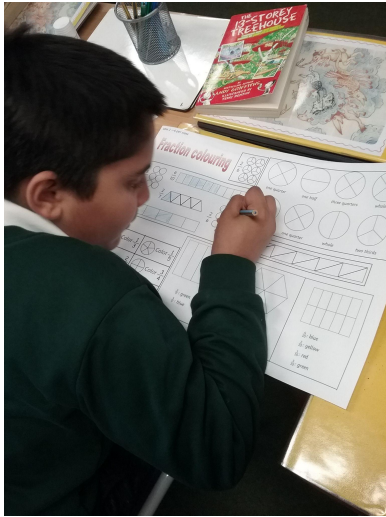
Year 5 Family Learning

Amazing family learning work from Year 5! Please keep bringing in more family learning to share with the class and celebrate the great work together.



Year 5

Year 5 are starting a new maths unit this week, our first lesson was 'What is a fraction?' This was a carousel activity including naming, drawing, and labelling fractions, and using fractions dominoes.



Year 6

Year 6 went on a walk along the canal as part of their geography lesson. They looked at the human impact on rivers and canals. They thought about how pollution can affect humans, wildlife and animals.



Story telling workshop

Monday 19th February 2024

8.45—9.45 and 12.30—1.30



You are invited to come and watch an
story lesson in Nursery.

We will be modelling a story making
session. You will have a chance to then
create a story with your child and
read with your child too!





The Hive

Employment
& Training Services

UPCOMING COURSES

Free accredited qualifications starting from September

Functional Skills English

From Entry 1 up to Entry 3



This qualification will enable you to build confidence and fluency in English. You will be assessed on your current level and confidence and start at the correct level for your abilities, with the chance to move up to Level 1 with us.

Basic Digital Skills

Entry 1 and Entry 2



The qualification is designed to increase your personal growth and independence, especially around your basic digital skills.



Hospitality and Catering

Level 1

Develop knowledge and skills in areas such as maintaining a safe and hygienic environment, working effectively in hospitality, maintaining food safety and producing basic dishes. Perfect for those looking to work in the hospitality industry.

Health and Care

Level 1 and Level 2

This is a great qualification for those interested in a career in the health and care or social care sectors, who need to learn the basic skills and core knowledge. You will also benefit from learning generic employability skills for all sectors.



SIA

L2 Door Supervisor and First Aid

This course contains the knowledge and skills you need to pass the exam and apply for an SIA licence. This licence will enable you to gain work in the security industry in roles such as event security, door supervisor, retail security and many more.

Emergency First Aid at Work

Level 3 Award

This will enable you to act as a First Aider within a workplace, in line with First Aid at Work Health and Safety Regulations. You will cover a range of workplace emergencies such as individuals who are unresponsive, choking, in shock or suffering external bleeding/minor injuries.

Food Safety for Catering

Level 2 Award

This qualification is designed to prepare you for or support you in employment in a catering role. You'll learn about good practice in the production of safe food (storage, preparation, cooking service and handling of food).

Eligibility

**You must be 19+, live in London,
and have the right to live and
work in the UK**

For more information, contact: thehivetraining@poplarharca.co.uk / 020 7510 9770

POP LAR HARCA

167a East India Dock Road
E14 0EA



BYGROVE PRIMARY SCHOOL

After School clubs

Club House - 3:45-5:30pm


Clubs - 3:45-4:45pm



**SIGN UP
NOW!**
ON
PARENTPAY

£17.50

LIST OF CLUBS

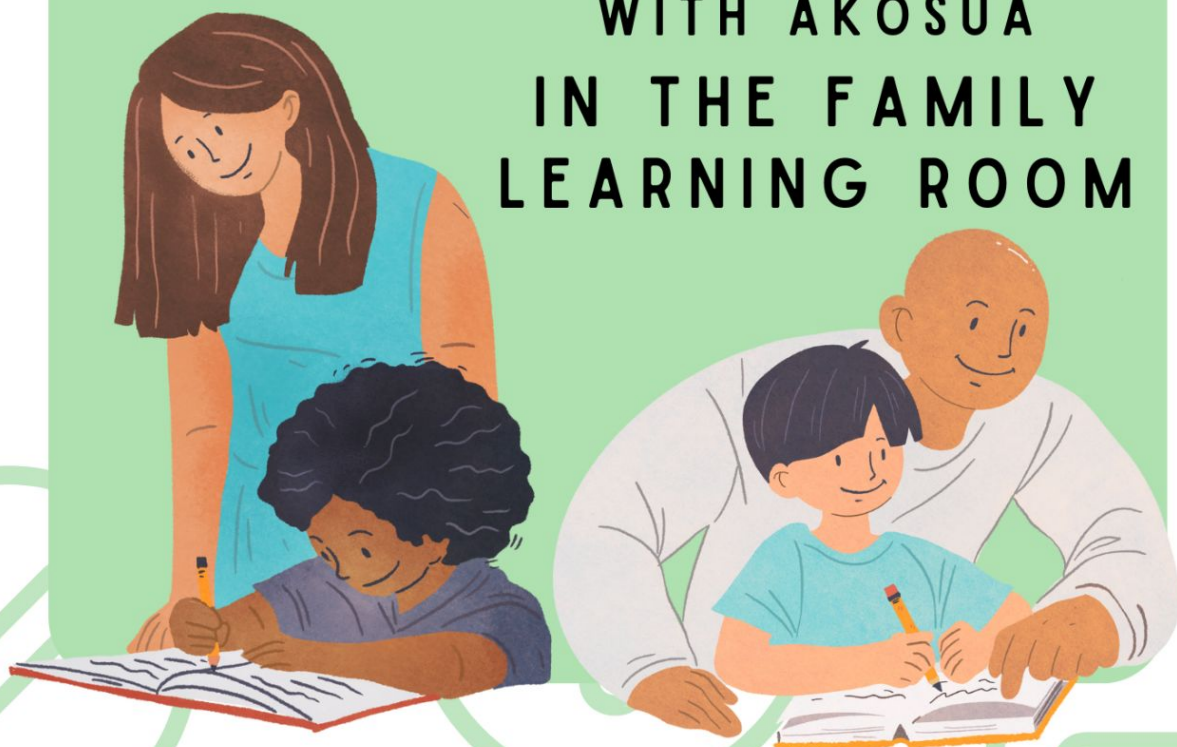
- 
- Music Production: Mondays - Yr2-Yr6
 - Football: Mondays: Rec - Yr2
 - Football: Tuesdays: Yr3 - Yr6
 - Basketball: Wednesdays: Yr3 - Yr6
 - Multi sports club: Thursdays: Yr3 - Yr6
 - Archery: Fridays: Yr3 - Yr6

**Club House: Monday-Friday
NURSERY - YR6**

MATH WORKSHOP: **Supporting maths at home**

9:15-9:45AM
MONDAY 19TH FEBRUARY 2024

WITH AKOSUA
IN THE FAMILY
LEARNING ROOM



Maths Workshop

Maths Mastery



**FRIDAY 15TH
MARCH
AT 9:15 - 9:45AM**

**WITH AKOSUA
IN THE FAMILY
LEARNING
ROOM**

SSF DATE 2024

**FRIDAY
9TH FEBRUARY
(LAST DAY OF TERM)**

A date for your diaries Year 4 parents & carers!
Next year's Year 4 Shakespeare Schools Festival
performance date is Friday 9th Feb 2024 at The
Greenwich Theatre. More info to come soon!

Shakespeare

We have the Shakespeare Schools Festival date!

Year 4's Shakespeare Schools Festival performance will be on
Friday 9th February 2024 at the Greenwich Theatre at 7:30pm.

Make sure to save the date in your diaries. More information to come
soon...

SSF

TICKETS ON SALE NOW

9TH FEB - GREENWICH THEATRE - 7:00PM



<https://greenwichtheatre.org.uk/events/shakespeare-schools-festival-feb-24/>



coffee Mornings



Come along to our coffee mornings, where you can socialise with other parents and have some coffee and biscuits.

Dates:

Friday 23rd February

Friday 22nd March

Friday 3rd May

Friday 21st June

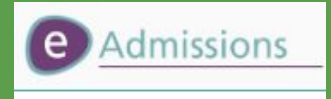
From 9:15am

School admissions application deadlines

Nursery parents/carers must apply for a Reception place by Monday 15th January 2024.

If you have or know someone with a child born between 1 September 2020 and 31 August 2021, you must apply for a Nursery place by Friday 16th February 2024. This is for for a nursery place for September 2024.

All applications must be completed via the [e-admissions portal](#).



Admission to Reception (primary school) 2024

Please read the [Starting Primary School in Tower Hamlets booklet](#) for useful information on the admission process.

Pupils usually start primary school in the September following their fourth birthday. If your child was born between 1 September 2019 and 31 August 2020 this will be from September 2024.

You must make an online application for a reception place, even if your child is already attending the school's nursery.

[Click here](#) for further school admissions information via the Tower Hamlets website





NURSERY

Places Available!

Do you have or know someone with a child born between 1 September 2020 and 31 August 2021?

Apply now via www.eadmissions.org.uk

They can start with us in September 2024



DID YOU
KNOW?

We also offer places to rising 3-year-olds to start nursery a term after turning 3 years old!

Please contact the school office on 020 7538 4925 or email admin@bygrove.org.uk

Click the link below for more information

[Nursery admissions 2024](#)



Bygrove School

Nursery places available

for September 2024

**Would you like your child to attend
an outstanding Nursery?**

Open days:


Monday 27th November 2023 from 4:00pm—5:00pm

Monday 15th January 2024 from 4:00pm—5:00pm

**Please contact the school office to arrange a visit to
the school.**

Call us on 02075384925 or email us at
admin@bygrove.org.uk

**If your child was born between 1st September 2020 & 31st August 2021 you
can apply for a Nursery place at Bygrove Primary School online at
www.eadmissions.org.uk**

A background image showing three young children on a playground. In the top left, a child is holding a blue ring. In the top right, a child is smiling and holding onto a blue rope. In the bottom left, a child is looking towards the camera. In the bottom right, a child is smiling and gesturing with their hands. The children are wearing school uniforms.

'This is a school that plans carefully for the needs of its children and parents.'

IQM, 2019

'I know they are in the best hands being at school with the amazing nursery team at Bygrove.'

Parent, 2021

'Personalised curriculum for pupils with additional needs was a fundamental aim of the school.'

IQM, 2020

Full time places are also available through the 30 hour funding scheme for working parents. You can check if you are eligible at www.childcarechoices.gov.uk

www.bygrove.org.uk | Find us on Twitter @bygrove_primary

Hall Hire

Price: £55 per hour
£50 deposit required at booking and only refundable after the event.

Availability: Most weekends and weekdays in the school holidays up until 10pm.

Car Park Space: 6 cars maximum.

8 double tables with benches attached and 40 chairs.
Playground use up until 8pm.

No alcohol allowed.

Please let us know if you would like to hire out the hall for birthdays, Mehndi parties, family gatherings, Eid parties and other events.

Contact Christina Maynard to arrange a viewing via admin@bygrove.org.uk or call 0207 538 4925



The
Byword