



The Byword



19th January 2024

www.bygrove.org.uk

@bygrove_primary

Key Dates

- Friday 26th January: Parent Coffee Morning
- Thursday 8th February: Parent 'have your say conference'
- Friday 9th February: INSET DAY - School closed
- Friday 9th February: Shakespeare School Festival Performance
- Monday 12th February - Friday 16th February: Half Term
- Monday 19th - Friday 1st March: Parent Consultations
- Friday 1st March: Year 4 Sleepover
- Thursday 7th March: World Book Day

Dear Parents & Carers,

We hope you have been keeping warm this week!

We were really proud & excited to share our Ofsted report with you this week & that Bygrove was graded 'Outstanding' all areas. We are so pleased that it captures everything that makes this school community so special. Thank you for all of your commitment & support - we couldn't do this without you.

[Bygrove Ofsted Inspection Report 2023](#)

This week we have enjoyed having Year 6 back in school following their residential trip to Fairplay House. The children have been sharing their highlights from the trip & tales about the giant swing, caves & zip wire! The adults were incredibly impressed with the courage, resilience & teamwork that the children displayed throughout the trip. They were a pleasure to take & we are really proud of them all.

Best wishes for the weekend ahead,

Fiona

Spaces are available!

To sign up, please log on to your ParentPay accounts. Each club space is offered on a first come, first served basis.

Please contact the school office for help with ParentPay.

Mondays

| | | | |
|------------------|--------------------|-------------|---------------------|
| Club House | Nursery - Year 6 | 3:45 - 5:30 | All welcome |
| Music Production | Years 2 - Year 6 | 3:45 - 4:45 | 12 spaces remaining |
| Football Club | Reception - Year 2 | 3:45 - 4:45 | 13 spaces remaining |

Tuesdays

| | | | |
|---------------|------------------|-------------|--------------------|
| Club House | Nursery - Year 6 | 3:45 - 5:30 | All welcome |
| Football Club | Years 3 - Year 6 | 3:45 - 4:45 | 8 spaces remaining |

Wednesdays

| | | | |
|-----------------|------------------|-------------|---------------------|
| Club House | Nursery - Year 6 | 3:45 - 5:30 | All welcome |
| Basketball Club | Year 3 - Year 6 | 3:45 - 4:45 | 11 spaces remaining |

Thursdays

| | | | |
|-------------------|------------------|-------------|--------------------|
| Club House | Nursery - Year 6 | 3:45 - 5:30 | All welcome |
| Multi-Sports Club | Years 3 - Year 6 | 3:45 - 4:45 | 9 spaces remaining |

Fridays

| | | | |
|--------------|------------------|-------------|---------------------|
| Club House | Nursery - Year 6 | 3:45 - 5:30 | All welcome |
| Archery Club | Years 3 - Year 6 | 3:45 - 4:45 | 16 spaces remaining |

Stars of the week



Y1: Taqwa

Y2: Arc-en-ciel & Farha

Y3: Salma

Y4: Eva

Y5: Omar

After School Clubs - Spring 2024

Each club costs £17.50 for the term. Breakfast club £1.00 and Ad-Hoc Club House sessions will cost £1.50 per day.

If you would like to make any changes with the club you have purchased, please let the office know by Monday 22nd January 2024.

Healthy Early Years London - Oral Health

Advice for Parents:

- Start brushing your baby's teeth as soon as they come through.
- Use the correct toothbrush for the age of your baby as this is much kinder on their gums, and a pea size amount of toothpaste.
- Introduce brushing your child's teeth twice a day and encourage brushing in circular movements.
- After brushing, it is best not to rinse the toothpaste.
- Most children will need your help at first, and then you can teach them to do it. Try to allow time and make toothbrushing a fun part of their bedtime routine.
- Limit the use of bottles and sippy cups, as these can cause decay on child's teeth.
- Avoid sugary sweets and drinks, as these will cling to your child's teeth and will cause decay. Brushing teeth regularly will help avoid tooth decay.
- Offer children milk or water to drink.
- Ensure your child is registered with a dentist and attends regularly, at first take them with you for your check-up appointments.



My name is Aishah and I will be completing my LETTA teacher training at Bygrove! I am excited to join the Bygrove community and supporting the children on their learning journeys.



My name is Zakia, I am the new Year 4 class teacher. I am looking forward to the exciting year ahead at Bygrove. I love baking & exploring new places.

Spring Term P.E Timetable

Year 1

| Dates | Day | What | Changing | Where |
|---------------|---------|-------------|--|------------------|
| Spring Term 1 | Tuesday | Dance | Change in school Go home in their PE kits | Hall |
| Spring Term 2 | Tuesday | Ball Skills | Change in school Go home in their PE kits | Pitch/Playground |

Year 2

| Dates | Day | What | Changing | Where |
|---------------------------------------|-----------|------------|--|-------|
| Part 1: 8th January - 2nd February | Wednesday | Gymnastics | Arrive at school in PE kits Change after playtime | Hall |
| Part 2: 5th February - 1st March | Monday | Gymnastics | Change in school Go home in their PE kits | Hall |
| Part 3: 4th March - 29th March | Wednesday | Athletics | Arrive at school in PE kits Change after playtime | Hall |

Year 3

| Dates | Day | What | Changing | Where |
|---------------|-----------|-----------|--|-------|
| Spring Term 1 | Wednesday | Dance | Change in school Go home in their PE kits | Hall |
| Spring Term 2 | Wednesday | Athletics | Change in school Go home in their PE kits | Hall |

Year 4

| Dates | Day | What | Changing | Where |
|---------------|--------|------------|--|-------|
| Spring Term 1 | Friday | Gymnastics | Arrive at school in PE kits Change after playtime | Hall |
| Spring Term 2 | Friday | Athletics | Arrive at school in PE kits Change after playtime | Hall |

Year 5

| Day | What | Changing | Where |
|--------|----------------------------------|-----------------|--------------|
| Monday | Swimming (9:30-10:30 session) | Change at venue | Poplar Baths |

Year 6

| Dates | Day | What | Changing | Where |
|-----------------------------------|----------|-----------|--|------------------|
| Spring Term 1 | Thursday | Tag Rugby | Change in school Go home in their PE kits | Pitch/Playground |
| Part 2 5th February-29th March | Tuesday | Cycling | Arrive at school in PE kits Change after playtime | Pitch/Playground |

Term Dates 2024/2025

Here are the term
dates for 2024/2025



The LETTA Trust Term Dates 2024-2025

| | |
|----------------------|--|
| INSET: School Closed | Monday 2 Sept 2024 & Tuesday 3 Sept 2024 |
| School open: | Weds 4 September – Friday 25 October 2024 |
| Half term: | Monday 28 October – Friday 1 November 2024 |
| School open: | Monday 4 November – Friday 20 December 2024 |
| Christmas Holiday: | Monday 23 December – Friday 3 January 2025 |
| School open: | Monday 6 January – Friday 14 February 2025 |
| Half term: | Monday 17 February – Friday 21 February 2025 |
| School open: | Monday 24 February – Friday 4 April 2025 |
| Spring Holiday: | Monday 7 April – Monday 21 April 2025 |
| School open: | Tuesday 22 April – Friday 23 May 2025 |
| May Bank Holiday: | Monday 5 May 2025 |
| Half term: | Monday 26 May– Friday 30 May 2025 |
| School open: | Monday 2 June – Thursday 24 July 2025 |
| *Good Friday | 18 April 2025 |
| *Easter Monday | 21 April 2025 |

The school will be closed on Eid celebration day below;

| | |
|--------------|---------------------------------|
| Eid-ul-Fitr: | Closure on Monday 31 March 2025 |
| Eid-ul-Adha: | Closure on Friday 6 June 2025 |

FYI

| | |
|----------------|--------------------------------------|
| KS2 SATs week: | Monday 12 May – Thursday 15 May 2025 |
|----------------|--------------------------------------|

Mile End Parkrun

What is Mile End parkrun?

A free, fun, friendly, weekly 5k community event. Walk, jog, run, volunteer or spectate - it's up to you!

When is it?

Every Saturday at 9:00am.

Where is it?

The event takes place at Mile End park. A link to the course and map is provided below.

What does it cost to join in?

Nothing - it's free! Please register before you first come alone. Only ever register with parkrun once and please don't forget to bring a scannable copy of your barcode. If you forget it, you won't get a time. Request a reminder of your barcode below.

How fast do i have to be?

All participants take part for their own enjoyment. Please come along and join in whatever your pace!

Mile End parkrun needs you!

It is entirely organised by volunteers - email milend@parkrun.com if you would like to help.

We're friendly!

Every week participants can grab a post parkrun coffee in a local cafe - everyone is welcome!

New Science Books

To help promote STEM subjects for the *girls* in our school (who are underrepresented in STEM careers) and for *BAME girls* (who are vastly underrepresented in STEM careers) we have bought some books as you can see in the pictures.

They showcase curious, inventive girls who are fascinated by science and engineering, and are great books



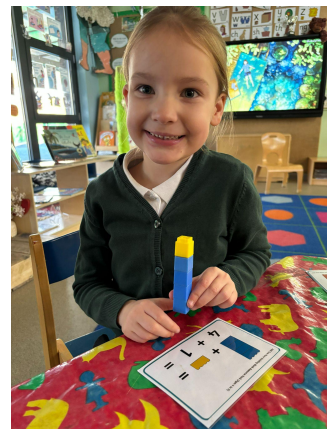


Reception

Reception have started planting a variety of flower bulbs at Forest School. They are excited to watch how their flowers grow. We hope to have some tulips, daffodils and hyacinths growing in our science garden soon! Thank you to Blooms for sending us the flower bulbs.

Reception

Reception are learning to 'add one' to numbers between 1-10. They have explored this through acting out number stories and then moving onto using mathematical resources during continuous provision.



Reception

Reception have a fantastic farmyard for their role play area this term. They are enjoying dressing up as farmers & caring for the farm animals. Today the farm was invaded by some giants! Luckily, Dilly Duck came to the rescue!



Year 1

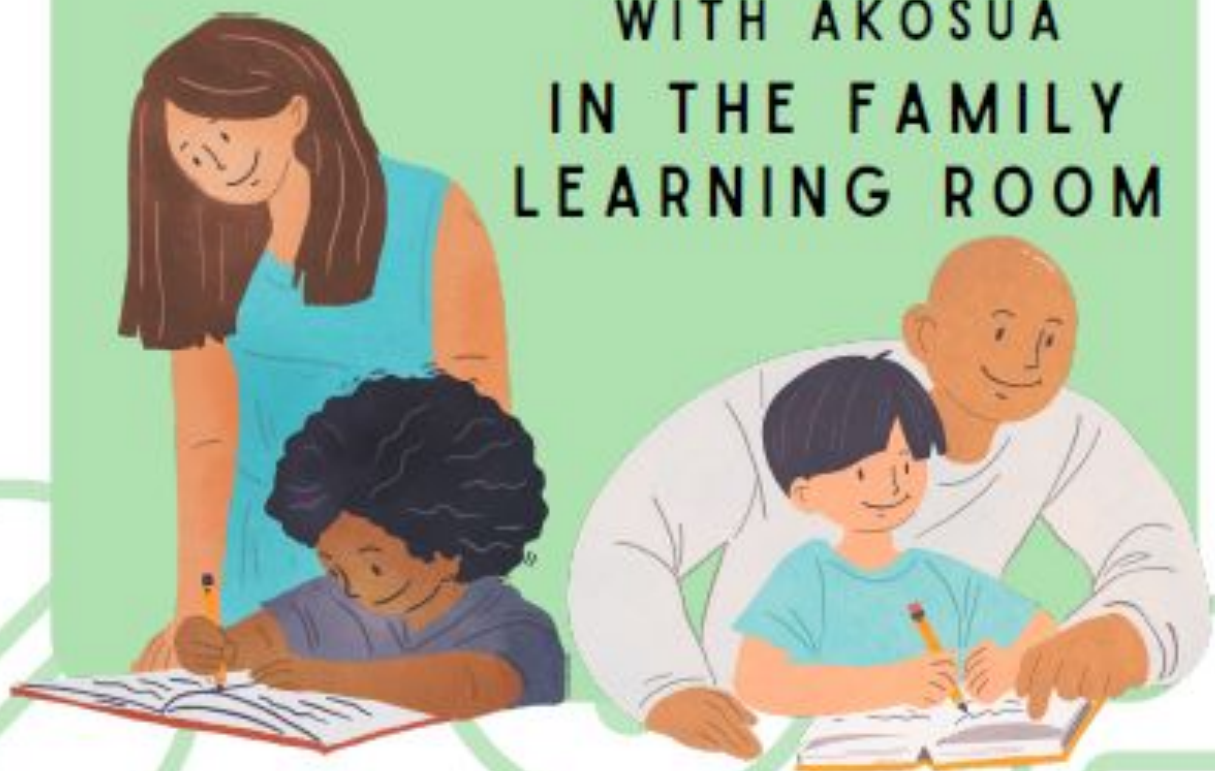
Year 1 wrapped up warm to go on their winter walk. They looked for seasonal changes. We spotted frost on the ground, noticed that our shadows were longer and saw that most of the trees had lost their leaves.



MATH WORKSHOP: **Supporting maths at home**

9:15-9:45AM
MONDAY 5TH FEBRUARY 2024

WITH AKOSUA
IN THE FAMILY
LEARNING ROOM



Maths Workshop

Maths Mastery



**FRIDAY 15TH
MARCH
AT 9:15 - 9:45AM**

**WITH AKOSUA
IN THE FAMILY
LEARNING
ROOM**



Triple P for Baby

Are you expecting a baby or are you a new parent with a baby under 12 months?

Join the Triple P for Baby programme

The programme will help you to:

- Adjust to life with your new baby
- Build a close relationship with your baby
- Support your baby's learning and development

Course structure

- Four weekly, classroom-based group sessions with other new parents
- Plus four individual consultations with a practitioner to reflect on your progress

Course content

- Creating the best environment for your baby
- Responding to your baby's cues
- Handling crying and comforting your baby
- Promoting good sleep habits
- Helping your baby learn and develop
- Taking good care of yourself as a new parent



Wednesdays
9.30am-12.30pm
17 January 2024 –
20 March 2024

Overland Children's Centre,
60 Parnell Road, E3 2RU
Crèche available

For more details and to book your place, email:
PAE@towerhamlets.gov.uk

SSF DATE 2024

FRIDAY
9TH FEBRUARY
(LAST DAY OF TERM)

A date for your diaries Year 4 parents & carers!
Next year's Year 4 Shakespeare Schools Festival
performance date is Friday 9th Feb 2024 at The
Greenwich Theatre. More info to come soon!

Shakespeare

We have the Shakespeare Schools Festival date!

Next year, Year 4's Shakespeare Schools Festival performance
will be on **Friday 9th February 2024 at the Greenwich Theatre.**

Make sure to save the date in your diaries. More information to come
soon...

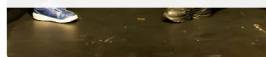
SSF

TICKETS ON SALE NOW

9TH FEB - GREENWICH THEATRE - 7:30PM



<https://greenwichtheatre.org.uk/events/shakespeare-schools-festival-feb-24/>



coffee

Mornings



Come along to our coffee mornings, where you can socialise with other parents and have some coffee and biscuits.

Dates:

Friday 26th January

Friday 23rd February

Friday 22nd March

Friday 3rd May

Friday 21st June

From 9:15am

School admissions application deadlines

Nursery parents/carers must apply for a Reception place by Monday 15th January 2024.

If you have or know someone with a child born between 1 September 2020 and 31 August 2021, you must apply for a Nursery place by Friday 16th February 2024. This is for for a nursery place for September 2024.

All applications must be completed via the [e-admissions portal](#).



Admission to Reception (primary school) 2024

Please read the [Starting Primary School in Tower Hamlets booklet](#) for useful information on the admission process.

Pupils usually start primary school in the September following their fourth birthday. If your child was born between 1 September 2019 and 31 August 2020 this will be from September 2024.

You must make an online application for a reception place, even if your child is already attending the school's nursery.

[Click here](#) for further school admissions information via the Tower Hamlets website





NURSERY

Places Available!

Do you have or know someone with a child born between 1 September 2020 and 31 August 2021?

Apply now via www.eadmissions.org.uk

They can start with us in September 2024



DID YOU
KNOW?

We also offer places to rising 3-year-olds to start nursery a term after turning 3 years old!

Please contact the school office on 020 7538 4925 or email admin@bygrove.org.uk

Click the link below for more information

[Nursery admissions 2024](#)



Bygrove School

Nursery places available

for September 2024

**Would you like your child to attend
an outstanding Nursery?**

Open days:


Monday 27th November 2023 from 4:00pm—5:00pm

Monday 15th January 2024 from 4:00pm—5:00pm

**Please contact the school office to arrange a visit to
the school.**

Call us on 02075384925 or email us at
admin@bygrove.org.uk

**If your child was born between 1st September 2020 & 31st August 2021 you
can apply for a Nursery place at Bygrove Primary School online at
www.eadmissions.org.uk**



'This is a school that plans carefully for the needs of its children and parents.'

IQM, 2019

'I know they are in the best hands being at school with the amazing nursery team at Bygrove.'

Parent, 2021

'Personalised curriculum for pupils with additional needs was a fundamental aim of the school.'

IQM, 2020

Full time places are also available through the 30 hour funding scheme for working parents. You can check if you are eligible at www.childcarechoices.gov.uk

www.bygrove.org.uk | Find us on Twitter @bygrove_primary

Hall Hire

Price: £55 per hour
£50 deposit required at booking and only refundable after the event.

Availability: Most weekends and weekdays in the school holidays up until 10pm.

Car Park Space: 6 cars maximum.

8 double tables with benches attached and 40 chairs.
Playground use up until 8pm.

No alcohol allowed.

Please let us know if you would like to hire out the hall for birthdays, Mehndi parties, family gatherings, Eid parties and other events.

Contact Christina Maynard to arrange a viewing via admin@bygrove.org.uk or call 0207 538 4925



The
Byword