



The Byword



12th January 2024

www.bygrove.org.uk

@bygrove_primary

Key Dates

- Monday 15th January: Maths - Building Fluency workshop
- Thursday 8th February: Parent 'have your say conference'
- Friday 9th February: INSET DAY - School closed
- Friday 9th February: Shakespeare School Festival Performance
- Monday 12th February - Friday 16th February: Half Term
- Monday 19th - Friday 1st March: Parent Consultations
- Friday 1st March: Year 4 Sleepover
- Thursday 7th March: World Book Day

Dear Parents & Carers,

Happy New Year to you all!

It has been a great first week of the spring term here at Bygrove. The children have returned from the break with big smiles on their faces & an eagerness to learn.

Today, Sarah & I carried out a termly behaviour & attitudes learning walk around the school. We were really impressed with the excellent behaviour for learning & conduct that we saw in every classroom. It is clear that children love coming to school & are proud of their learning & achievements. We observed children from Nursery to KS2 collaborating, sharing, taking turns, problem solving & supporting their friends. Relationships between the adults and children are also positive & respectful. It was a pleasure to see!

I am excited to let you know that our Ofsted report should be published next week. I have read the draft & I hope that you will be as proud as we are! We will share it with you as soon as it has been finalised.

A big well done to Y2 who had 100% attendance this week!

Wishing you all a lovely weekend,

Fiona

Spaces are available!

To sign up, please log on to your ParentPay accounts. Each club space is offered on a first come, first served basis.

Please contact the school office for help with ParentPay.

Mondays

Club House	Nursery - Year 6	3:45 - 5:30	All welcome
Music Production	Years 2 - Year 6	3:45 - 4:45	12 spaces remaining
Football Club	Reception - Year 2	3:45 - 4:45	13 spaces remaining

Tuesdays

Club House	Nursery - Year 6	3:45 - 5:30	All welcome
Football Club	Years 3 - Year 6	3:45 - 4:45	8 spaces remaining

Wednesdays

Club House	Nursery - Year 6	3:45 - 5:30	All welcome
Basketball Club	Year 3 - Year 6	3:45 - 4:45	11 spaces remaining

Thursdays

Club House	Nursery - Year 6	3:45 - 5:30	All welcome
Multi-Sports Club	Years 3 - Year 6	3:45 - 4:45	10 spaces remaining

Fridays

Club House	Nursery - Year 6	3:45 - 5:30	All welcome
Archery Club	Years 3 - Year 6	3:45 - 4:45	16 spaces remaining

Stars of the week



Y1: Tobias

Y2: Khaleel & Saihan

Y3: Hafsah

Y4: Noah

Y5: Amira

After School Clubs - Spring 2024

Each club costs £17.50 for the term. Breakfast club £1.00 and Ad-Hoc Club House sessions will cost £1.50 per day.

If you would like to make any changes with the club you have purchased, please let the office know by Monday 22nd January 2024.

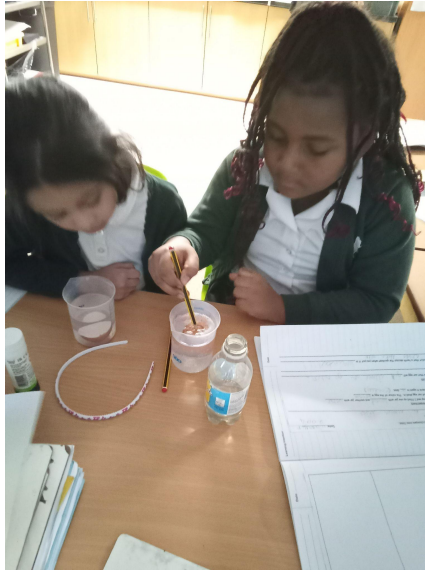
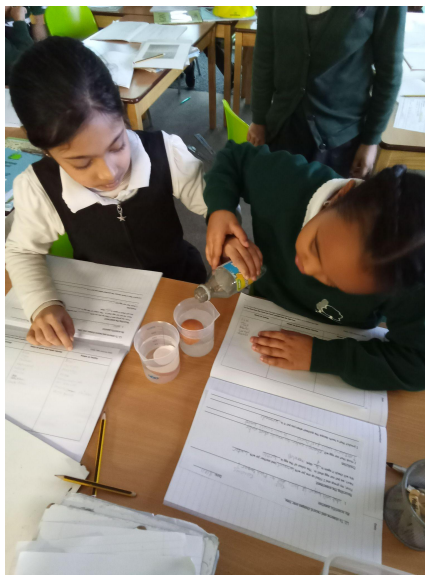
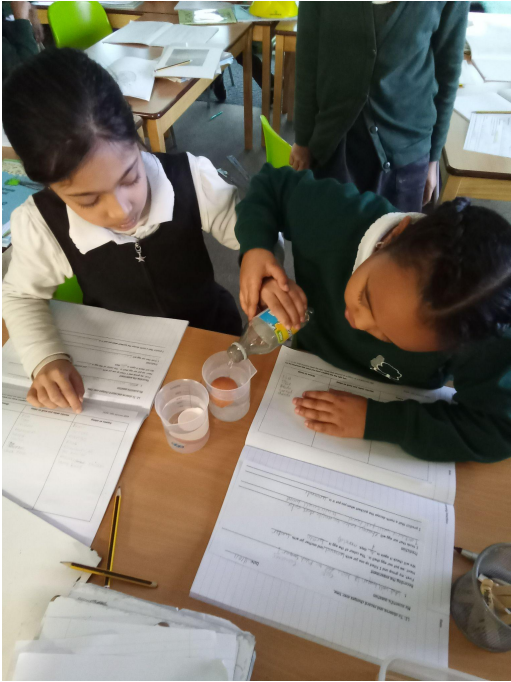
Reception

Some of our Reception children have been exploring rhythm & sounds using claves. They were excited to make fast & slow beats this week.



Year 3

Year 3 are learning about what causes tooth decay and conducting scientific experiments. They are observing and recording changes over time.



Year 5

Year 5 are exploring new authors and genres. The class has a new set of Bear Grylls Adventure books, where they learn about new, extreme landscapes, and the survival skills necessary. Next week - fantasy novels!



Y6 Fairplay House

Year 6 had an amazing time at Fairplay house. They participated in lots of activities such as the giant swing, caving, learning how to start a fire & building shelters. They also enjoyed watching a movie with some delicious snacks.



MATH WORKSHOP

Building Fluency



**MONDAY
11TH
JANUARY
9:15 - 9:45am**



With Akosua

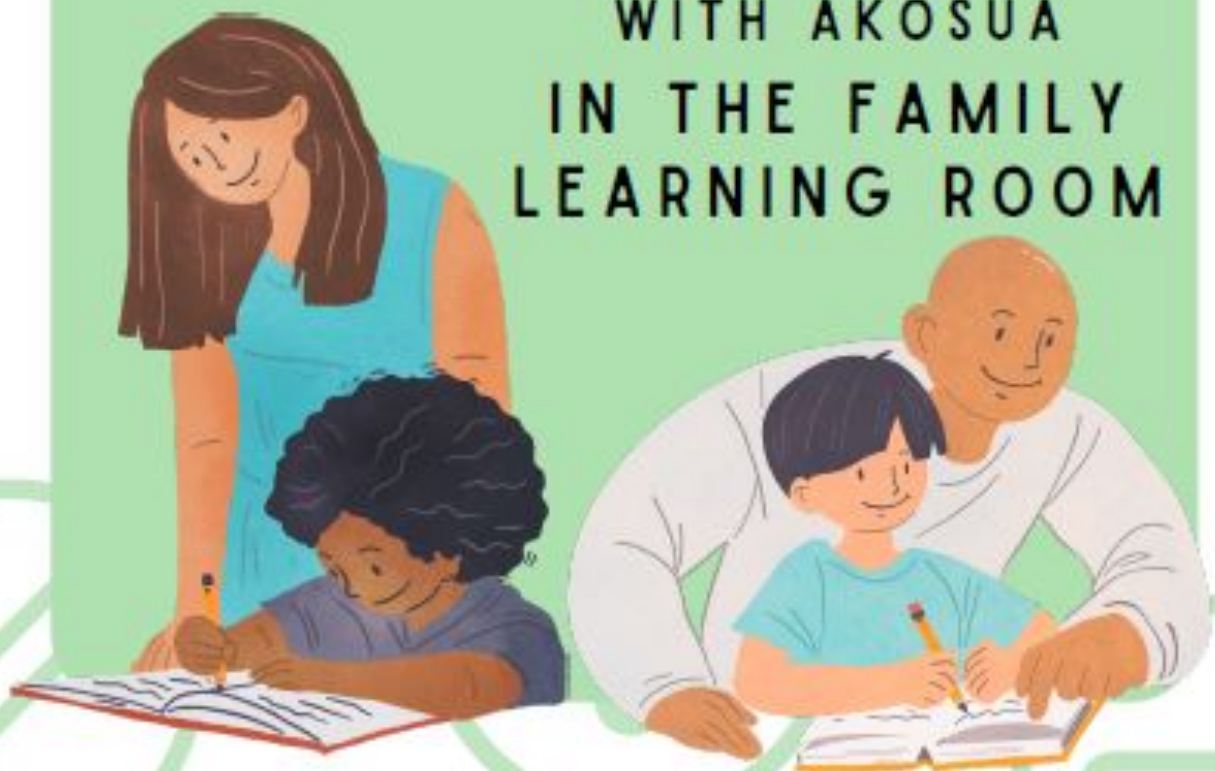
**In the Family
Learning room**



MATH WORKSHOP: **Supporting maths at home**

9:15-9:45AM
MONDAY 5TH FEBRUARY 2024

WITH AKOSUA
IN THE FAMILY
LEARNING ROOM



Maths Workshop

Maths Mastery



**FRIDAY 15TH
MARCH
AT 9:15 - 9:45AM**

**WITH AKOSUA
IN THE FAMILY
LEARNING
ROOM**



Triple P for Baby

Are you expecting a baby or are you a new parent with a baby under 12 months?

Join the Triple P for Baby programme

The programme will help you to:

- Adjust to life with your new baby
- Build a close relationship with your baby
- Support your baby's learning and development

Course structure

- Four weekly, classroom-based group sessions with other new parents
- Plus four individual consultations with a practitioner to reflect on your progress

Course content

- Creating the best environment for your baby
- Responding to your baby's cues
- Handling crying and comforting your baby
- Promoting good sleep habits
- Helping your baby learn and develop
- Taking good care of yourself as a new parent



Wednesdays
9.30am-12.30pm
17 January 2024 –
20 March 2024

Overland Children's Centre,
60 Parnell Road, E3 2RU
Crèche available

For more details and to book your place, email:
PAE@towerhamlets.gov.uk

SSF DATE 2024

FRIDAY
9TH FEBRUARY
(LAST DAY OF TERM)

A date for your diaries Year 4 parents & carers!
Next year's Year 4 Shakespeare Schools Festival
performance date is Friday 9th Feb 2024 at The
Greenwich Theatre. More info to come soon!

Shakespeare

We have the Shakespeare Schools Festival date!

Next year, Year 4's Shakespeare Schools Festival performance
will be on **Friday 9th February 2024 at the Greenwich Theatre.**

Make sure to save the date in your diaries. More information to come
soon...

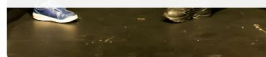
SSF

TICKETS ON SALE NOW

9TH FEB - GREENWICH THEATRE - 7:30PM



<https://greenwichtheatre.org.uk/events/shakespeare-schools-festival-feb-24/>



coffee

Mornings



Come along to our coffee mornings, where you can socialise with other parents and have some coffee and biscuits.

Dates:

Friday 26th January

Friday 23rd February

Friday 22nd March

Friday 3rd May

Friday 21st June

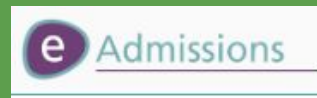
From 9:15am

School admissions application deadlines

Nursery parents/carers must apply for a Reception place by Monday 15th January 2024.

If you have or know someone with a child born between 1 September 2020 and 31 August 2021, you must apply for a Nursery place by Friday 16th February 2024. This is for for a nursery place for September 2024.

All applications must be completed via the [e-admissions portal](#).



Admission to Reception (primary school) 2024

Please read the [Starting Primary School in Tower Hamlets booklet](#) for useful information on the admission process.

Pupils usually start primary school in the September following their fourth birthday. If your child was born between 1 September 2019 and 31 August 2020 this will be from September 2024.

You must make an online application for a reception place, even if your child is already attending the school's nursery.

[Click here](#) for further school admissions information via the Tower Hamlets website





NURSERY

Places Available!

Do you have or know someone with a child born between 1 September 2020 and 31 August 2021?

Apply now via www.eadmissions.org.uk

They can start with us in September 2024



DID YOU
KNOW?

We also offer places to rising 3-year-olds to start nursery a term after turning 3 years old!

Please contact the school office on 020 7538 4925 or email admin@bygrove.org.uk

Click the link below for more information

[Nursery admissions 2024](#)



Bygrove School

Nursery places available

for September 2024

**Would you like your child to attend
an outstanding Nursery?**

Open days:


Monday 27th November 2023 from 4:00pm—5:00pm

Monday 15th January 2024 from 4:00pm—5:00pm

**Please contact the school office to arrange a visit to
the school.**

Call us on 02075384925 or email us at
admin@bygrove.org.uk

**If your child was born between 1st September 2020 & 31st August 2021 you
can apply for a Nursery place at Bygrove Primary School online at
www.eadmissions.org.uk**

A background image showing several young children in school uniforms playing on a wooden playground structure. One child in the top left is holding a blue ring. Another child in the top right is smiling and holding onto a rope. In the bottom left, a child is looking towards the camera. In the bottom right, a child is smiling and gesturing with their hands.

'This is a school that plans carefully for the needs of its children and parents.'

IQM, 2019

'I know they are in the best hands being at school with the amazing nursery team at Bygrove.'

Parent, 2021

'Personalised curriculum for pupils with additional needs was a fundamental aim of the school.'

IQM, 2020

Full time places are also available through the 30 hour funding scheme for working parents. You can check if you are eligible at www.childcarechoices.gov.uk

www.bygrove.org.uk | Find us on Twitter @bygrove_primary

Hall Hire

Price: £55 per hour
£50 deposit required at booking and only refundable after the event.

Availability: Most weekends and weekdays in the school holidays up until 10pm.

Car Park Space: 6 cars maximum.

8 double tables with benches attached and 40 chairs.
Playground use up until 8pm.

No alcohol allowed.

Please let us know if you would like to hire out the hall for birthdays, Mehndi parties, family gatherings, Eid parties and other events.

Contact Christina Maynard to arrange a viewing via admin@bygrove.org.uk or call 0207 538 4925



The
Byword