



# The Byword



16th December 2022

[www.bygrove.org.uk](http://www.bygrove.org.uk)

@bygrove\_primary

Dear Parents & Carers,

We have had a brilliant week at Bygrove to finish the autumn term! Year 1 put on a fantastic show for the children & parents on Monday & Tuesday. We were so impressed with their confidence & singing. Thank you to everyone who came along - we hoped you enjoyed it!

The children had lots of fun at class parties this week & at the annual Christmas lunch. They also had a very special visitor from the North Pole who was incredibly happy with the children's behaviour & manners. The week finished in style with the Cinderella pantomime!

We are looking forward to seeing you all on Tuesday 3rd January for the start of the spring term. We understand that there have been seasonal bugs going around but it is really important that the children attend school as much as possible next term. Children should be in school for at least 97% of the school year otherwise they are at significant risk of falling behind in their learning. Research shows that children with poor attendance do not achieve as well as those with good attendance. Sharon & Charlotte are available to discuss attendance if you need any support.

We hope that you all have a restful festive break with your family & friends.

Wishing you all a Happy New Year!

Best wishes,

Fiona,



## Key Dates

- **Monday 19th December-Monday 2nd January 2023: School closed for Christmas holiday**
- Tuesday 3rd January: All pupils return to school
- Monday 9th January: Nursery open days (4-5:30pm) Book appointment with the office.
- Monday 6th February: Children's Mental Health Awareness.
- Thursday 9th February: Parents have your say conference.
- Friday 10th February: Year 3 performance
- Monday 13th - Friday 17th February: Half term.
- Monday 20th February: INSET day
- Tuesday 21st February: All pupil return to school.
- Tuesday 21st - Friday 3rd February: Parent consultation
- Tuesday 27th February: World Book day.
- Friday 3rd March: Year 4 Sleepover
- Monday 6th March: Year 5 & year 6 Residential week (Gorsefield)
- Monday 13th March: Thinking of others week
- Friday 17th March: Red Nose Day
- Wednesday 29th March: Shakespeare School Festival year 4
- Friday 31st March: Autism Awareness
- Monday 3rd- Friday 14th April: Easter Holidays
- Monday 17th April: INSET DAY - School closed

**INVESTORS IN PEOPLE®**  
We invest in people Platinum



# Spaces for January 2023 until March 2023 are now available!

Please contact the School Office for help with ParentPay.

## Attendance

**Year 4: 96.67%**

**Well done Year 4!**

## After School Clubs - Spring 2023

Each club costs £15.00 for the term. Breakfast club will cost £1.00 per day and Ad-Hoc Club House sessions will cost £1.50 per day.

To sign up, please log on to your ParentPay accounts. Each club space is offered on a first come, first served basis.

If you would like to make any changes with the club you have purchased, please let the office know by Monday 16th January 2023.

### Monday

Club House	Nursery - Y6	3:45 - 5:30	All welcome
Drumming Club	Years 3 - Y6	3:45 - 4:45	20 spaces
Basketball Club	Reception - Y2	3:45 - 4:45	20 spaces

### Tuesday

Club House	Nursery - Y6	3:45 - 5:30	All welcome
Football Club	Years 3 - Y6	3:45 - 4:45	20 spaces

### Wednesday

Club House	Nursery - Y6	3:45 - 5:30	All welcome
Basketball Club	Years 3 - 6	3:45 - 4:45	20 spaces

### Thursday

Club House	Nursery - Y6	3:45 - 5:30	All welcome
Archery Club	Years 3 - 6	3:45 - 4:45	20 spaces
Cooking Club	Years 2 - 6	3:30 - 5:00	20 spaces

### Friday

Club House	Nursery - Y6	3:45 - 5:30	All welcome
Computing Club	Years 3 - 6	3:45 - 4:45	15 spaces
Tennis/ Table Tennis Club	Years 3 - 6	3:45 - 4:45	20 spaces

Prize	Name	Class
1st	Baboucar	Year 1
2nd	Mahveen	Year 3
3rd	Jumana	Reception
4th	Daris	Year 2
5th	Kosi	Year 2
6th	Jessica	Year 6
7th	Mira	Year 1
8th	Arafat	Year 6
9th	Saiyan	Nursery
10th	Khadhija	Year 4
11th	Maryam	Year 6
12th	Jessica	Year 6

**Christmas Raffle  
ticket winners!**

Congratulations!

Thank you all for contributing. We raised a total of £203.00!



**Panto**

‘Oh Yes It Is..!’

This morning we were invited to the Royal Christmas Ball and enjoyed the wonderful story of Cinderella.





## Reception

Reception went to visit Santa's Grotto at Tower Gateway Station this week. They had their face painted, they made glittery oats for reindeers and they received a lovely gift bag from Santa!



## Christmas Lunch

On Wednesday we enjoyed our Christmas meal whilst wearing the hats we made. We even had our staff joining us with crackers and music.







## The Christmas Show

On Monday and Tuesday we performed 'The Cheeky Cherubs'. Year 1 were the main performers and every class had an important role too. Our costumes were:

Nursery - Angels  
 Reception - Animals or pyjamas  
 Year 1 - Angels & individual costumes  
 Year 2 - Christmas jumpers & party hats  
 Year 3 - Shepherds  
 Year 4 - Kings  
 Year 5 - Christmas jumpers  
 Year 6 - All black

Staff even got to perform too.

Thank you all for coming!



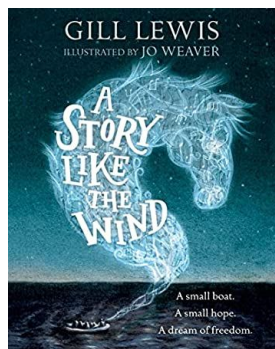
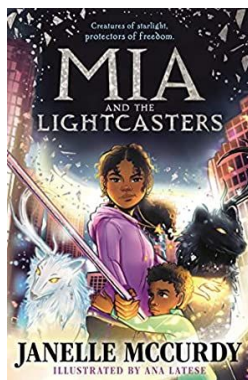
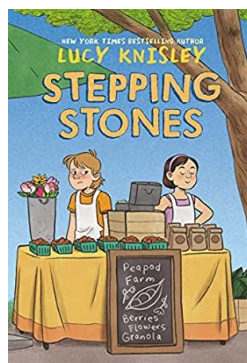
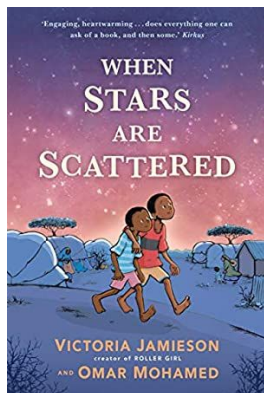




## Snow day!

We safely enjoyed playing in the snow this week. We even made a snowman in our playground!





## Amazon Wishlist

Now that we have our beautiful, new library, we want to fill it with wonderful books for our children & families to enjoy. We have set up an Amazon wishlist of books that our children would love to read.

Please share this list with any companies or individuals who you think would be happy to support it. Every book donated will contain a thank you message to the purchaser.

Thank you in advance for your support:  
<https://amzn.eu/b9EIUbh>

There are more books on our list to choose from! we need help to fill our library and promote reading. Check out <https://amzn.eu/b9EIUbh> and feel free to share the link.





# SSF DATE 2023

**DATE CHANGE!**

**Wednesday  
29th March  
2023**

A date for your diaries Year 4 parents & carers!  
Next year's Year 4 Shakespeare Schools Festival  
performance date is Wednesday 29th March  
2023 at The Greenwich Theatre. More info soon!

## Year 4 Shakespeare Schools Festival

Parents/Carers will be able to watch the Year 4 performance at The Greenwich Theatre. More information will be coming up soon!



  
**MILE END  
STADIUM**

**ADDRESS: BURDETT ROAD, E3 4HL,  
TOWER HAMLETS**

**S.E.N.D**  
**DATE: SATURDAY**  
**1:00PM-2:00PM (8-18 YEARS)**

PLEASE ENSURE YOU MAKE CONTACT PRIOR TO ATTENDING BY  
EMAILING [COMMUNITYSPORT@WESTHAMUNITED.CO.UK](mailto:COMMUNITYSPORT@WESTHAMUNITED.CO.UK)

Sessions take place at **Mile End Stadium** on **Saturdays** from  
**1pm-2pm, 8-18-year-olds.**

Email the organiser directly before attending:  
[communitysport@westhamunited.co.uk](mailto:communitysport@westhamunited.co.uk)

## Free Premier League Kicks Sessions for SEND pupils in Tower Hamlets

There is an opportunity for young residents with SEND to access free physical activity sessions with Premier League Kicks sessions at Mile End Stadium. These sessions are delivered in partnership with West Ham United Foundation and their skilled specialist coaches offer a great way for young people to get exercise, let off steam and meet friends in a safe environment.



Bygrove  
School

## Nursery places available for September 2023

Would you like your child to  
attend an outstanding Nursery?

### Open days

Every morning from Mon 31st October 2022 to Friday 4th  
November 2022, (pre booked appointments only)

Wednesday 2nd November 2022 4–5:30PM

Monday 9th January 2023 4–5:30 PM

Please contact the school office to arrange a visit to the school

call us on [02075384925](tel:02075384925) or email us at  
[admin@bygrove.org.uk](mailto:admin@bygrove.org.uk)

If your child was born between 1st September 2019  
& 31st August 2020 you can apply for a Nursery  
place at Bygrove Primary School online at  
[www.eadmissions.org.uk](http://www.eadmissions.org.uk)

## Nursery Open Days:

Monday 9th January  
2023: 4PM-5:30PM

Please contact the  
school office to arrange  
a visit to the school

Call us on 02075384925

or

Email us at  
[admin@bygrove.org.uk](mailto:admin@bygrove.org.uk)

If your child was born  
between 1st September  
2019 & 31st August 2020,  
you can apply for a  
Nursery place at  
Bygrove Primary School  
online at  
[www.eadmissions.org.uk](http://www.eadmissions.org.uk)



# School applications are now open



<b>Primary admissions</b> For children born between 1 September 2018 and 31 August 2019	<b>15 January 2023</b>
<b>Nursery admissions</b> For children born between 1 September 2019 and 31 August 2020	<b>16 February 2023</b>

## Nursery Admissions sessions Date & Time:

Thursday 12th January 2023 10am

Tuesday 7th February 2023 10am

Session link: <https://GR2023.eventbrite.co.uk>

## Reception Admissions sessions Date & Time:

Friday 13th January 2023 10am

Wednesday 1st February 10am

Session link: <https://GS2023.eventbrite.co.uk>

Check out information regarding Reception admissions via

<https://www.towerhamlets.gov.uk/Documents/Education-and-skills/Admissions-and-exclusions/Admissions-2022/Primary-School-prospectus.pdf>

Check out information regarding Nursery admissions via

<https://www.towerhamlets.gov.uk/Documents/Education-and-skills/Admissions-and-exclusions/Admissions-2022/Nursery-prospectus.pdf>

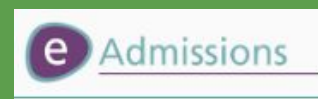
## Nursery & Reception Admissions sessions & Application Deadlines

The Admissions Service LBTH team are holding virtual information sessions for parents/carers with the Transition Support Service on Reception and Nursery admissions as it is time to apply.

Nursery parents/carers must apply for a Reception place by Sunday 15th January 2023.

If you have or know someone with a child born between 1st September 2019 and 31st August 2020, you must apply for a Nursery place by Thursday 16th February 2023.

All applications must be completed via the [e-admissions portal](#).



### How will I be notified about the outcome of my application?

You will receive an email and a letter on National Offer Day.



SCAN ME

# Hall Hire

**Price: £45 per hour**  
**£50 deposit required at booking and only refundable after the event.**

**Availability: Most weekends and weekdays in the school holidays up until 10pm.**

**Car Park Space: 6 cars maximum.**

**8 double tables with benches attached and 40 chairs.**  
**Playground use up until 8pm.**

**No alcohol allowed.**

**Please let us know if you would like to hire out the hall for birthdays, Mehndi parties, family gatherings, Eid parties and other events.**

**Contact Christina Maynard to arrange a viewing via [admin@bygrove.org.uk](mailto:admin@bygrove.org.uk) or call 0207 538 4925**



The  
**Byword**