



The Byword



4th November 2022

www.bygrove.org.uk

@bygrove_primary

Key Dates

- Thursday 10th November: SEND Parent Workshop - 9:15am - Family Learning Room
- Monday 14th November - Friday 18th November: Friendship & Anti-Bullying Week. Parents are invited to the sharing assembly on Friday 18th November at 9.15am.
- Thursday 8th December: Christmas Jumper Day
- Monday 12th December & Tuesday 13th December: The Nativity & Christmas Performance - tickets TBC parents/carers welcome
- Wednesday 14th December: Christmas Lunch
- Thursday 15th December: Christmas Parties
- **Friday 16th December: Last day of school & Autumn Term - Children to be collected at 1.30pm**
- **Monday 19th December-Monday 2nd January 2023: School closed for Christmas holiday**
- Tuesday 3rd January: All pupils return to school

Dear Parents & Carers,

Thank you very much to all of the parents who were able to attend our parent consultations this week. Our teachers enjoyed meeting with you to discuss the children's learning & we hope that you found this useful. Strong partnerships with parents are key for the children's success so we appreciate you taking the time to come into school & working closely with us.

Atera & the teaching teams are busy preparing for Friendship & Anti-Bullying 2022. During this themed week, the children will explore what it means to be good friend, what bullying is & what it isn't and what to do if they experience bullying. We would love to invite parents to the sharing assembly on Friday 18th November at 9.15am to hear what the children have been learning.

As part of our Healthy School status and to support our children who have food allergies or intolerances, we can have healthy birthday treats when celebrating in school. Fruit, fruit platters or fruit kebabs will be accepted. This is to promote health eating & to keep all children safe. We are not able to accept sweet treats but are happy to celebrate birthdays with a song!

Wishing you all a lovely weekend,

Fiona





Stars of the week



Y1: Dielli + Hermes

Y2: Sofia

Y3: Taqi + Sama

Y4: Amanah

Y5: Nahid

Y6: Usman

Attendance

Year 3: 99.66%

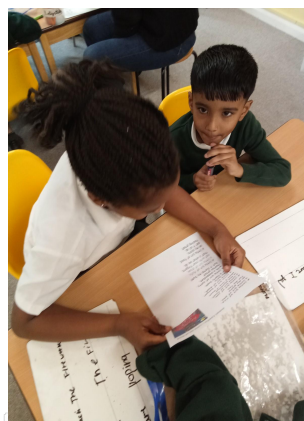
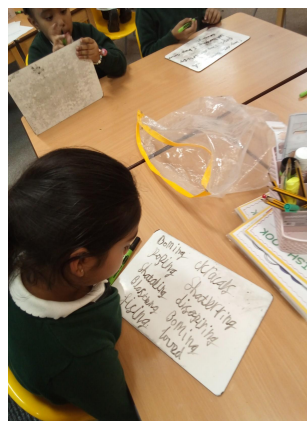
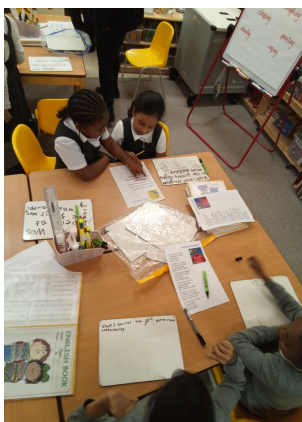
Well done Year 3!

Inclusive Sports event

Before the holidays we joined the Inclusive Sports event supported by the Canary Wharf Group & Leyton Orient at Malmsbury Primary School! What a fab time was had by everyone!

Year 2

Year 2 are working towards writing some amazing poetry. We watched some videos of bonfire night and fireworks. We then noted down all of our ideas on different verbs to use to describe what we see & hear. We then used our new learning to identify verbs in some poems and discussed their effect.





Year 1

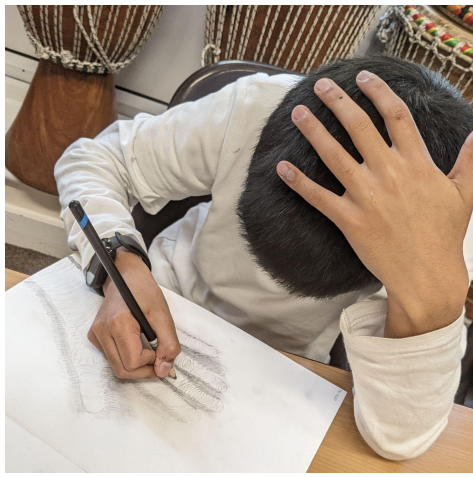
Year 1 started their learning all about 'The Gingerbread Man' by listening to the story using the Now Press Play set. The children were immersed in the story and able to act out being several different characters including the fox, the gingerbread man and the bakers. Soon they will be writing their very own versions of the story.



Year 2

Year 2 have started learning about holy books in different religions. We learnt about the Holy Bible, the Quran and the Torah. We also talked about how to treat our sacred texts!





Year 6

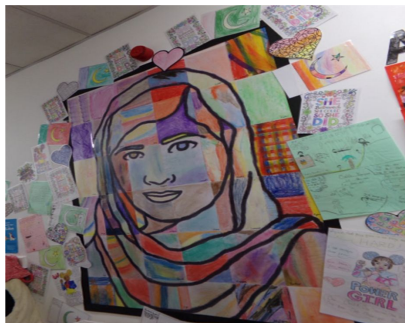
Like many artists, Henry Moore loved drawing hands. So our Year 6 artists did the same. Lovely work Year 6!



Year 2

Our Year 2 artists celebrated the completion of their magnificent dragon landscapes with an exhibition. Adding fiery flames had made them look even more dramatic! Thanks to Cressida Cowell for inspiration.





Explorers

Explorers is back! The children have had a chance to get to know their new families and will start their autumn term destinations.

Here is a reminder of the Bygrove Families:

Pacific Explorers

Mount Everest Explorers

Milky Way Explorers

Volcanic Explorers

Inca Explorers &

Antarctica Explorers

Ask your child which Family they belong to!

Each **Family** will begin a new **Destination** which they will complete over the next four weeks.

Each Destination has a focus on chosen **Behaviours**.

Please ask your children which Destination they are completing and how they can get better at these Behaviours this half term.

Which Destination are you completing this half term?

Star Spotter - Focus Behaviours: Teamwork & Curiosity

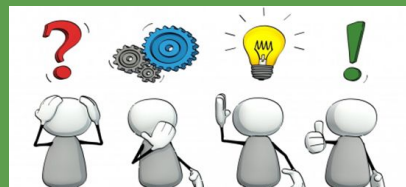
Good Neighbour - Focus Behaviours: Kindness, Citizenship & Teamwork

Crafter - Focus Behaviours: Creativity & Determination

Night Navigator - Focus Behaviours: Curiosity, Creativity & Confidence

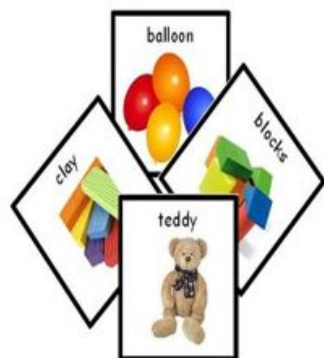
Local Hero - Focus Behaviours: Citizenship & Teamwork

Legacy Makers - Focus Behaviours: Citizenship & Creativity



SEND Parents Group with Sabina!

Communicating with children with special needs



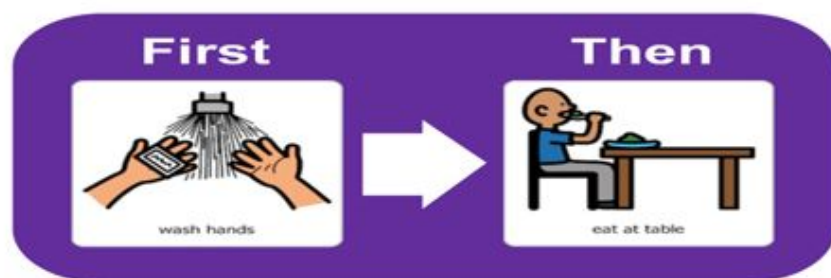
Is your child non-verbal or has limited communication skills?

Do you want to try different ways of communicating with your child and helping them to understand?

Please come to our workshop on Thursday 10th of November 2022.

Time 9.15 am

Venue: Family Learning Room at Bygrove School.



The Government has launched the 'Help for Households' scheme. The homepage brings together over 40 support schemes that the public can access, depending on eligibility, including help with:

- Household costs
- Energy Bills
- Childcare costs
- Income support
- Transport costs

Help for Households

Additionally, a range of online tools will help citizens quickly and efficiently check the support they might be eligible for and how to access it.

<https://helpforhouseholds.campaign.gov.uk/>

www.letta.org.uk

[SEND Parents Group with Sabina](#)

[Help for Households](#)



Bygrove Primary School Lunchtime Menu October 2022 - April 2023

Week 1	Monday 'Planet Earth Day'	Tuesday 'Street Food Day'	Wednesday 'Traditional Day'	Thursday 'World Food Day' Mexican	Friday 'Favourites'
Main	Homemade Macaroni Cheese	Homemade Beef Cottage Pie	Roast Chicken with Yorkshire Pudding & Gravy	Chicken Tenders	Bubble Fish Bites served with a Slice of Lemon
Vegetarian	Piri Piri Veggie Meatballs with Wholemeal Spaghetti	Quorn Dippers with Herby Diced Potatoes	Homemade Cheese, Tomato & Red Onion Tart	Homemade 3 Bean Mexican Chili Wrap	Freshly Baked Vegan Sausage Roll
On the side	Sweetcorn & Garden Peas	Fresh Broccoli & Carrots	Roast Potatoes, Fresh Cabbage & Cauliflower Florets	Diced Potatoes, Fresh Roasted Vegetables & Sweetcorn	Chips, Peas & Baked Beans
Salads	Fresh Seasonal Salads	Seasonal Salads & Fresh Crudites (Carrot / Cucumber & Celery)	Chef's House Salad	Crisp Green Salad & Fresh Tomato Salsa	Seasonal Salads & Homemade Coleslaw
Dessert	FRUITY MONDAYS with fresh seasonal fruit	Fresh sliced Melon & Grapes	Homemade Rice Pudding with Peaches	Homemade Beetroot & Chocolate Brownie with Custard	Frozen Mango Yoghurt
Daily Options	Bread / Fresh Fruit Platter / Organic Yoghurts / British Cheese and Crackers				

Week 2	Monday 'Planet Earth Day'	Tuesday 'Street Food Day'	Wednesday 'Traditional Day'	Thursday 'World Food Day' African	Friday 'Favourites'
Main	Freshly Baked Pizza with Sweetcorn & Peppers with Baked Potato Wedges	Homemade Tandoori Chicken Drumstick with Soft Brown Rice	Roast Beef with Yorkshire Pudding & Gravy	Homemade African Lamb Jollof Rice	Baked Fish Fillet with a wedge of Lemon
Vegetarian	Ratatouille Ravioli with Homemade Tomato & Vegetable Sauce	Baked Jacket Potato with choice of filling (Tuna / Cheese)	Spanish Omelette	Vegan Sausages with Diced Potatoes	Quorn Dippers & BBQ Sauce
On the side	Sweetcorn Cobbette & Fresh Broccoli	Sweetcorn & Peas	Roast Potatoes, Fresh Carrots & Savoy Cabbage	Diced Potatoes & Roasted Seasonal Vegetables	Oven Chips, Peas & Baked Beans
Salads	Selection of Autumn / Winter Salads	Seasonal Salads & Cucumber Raita	Chef's House Salad	Seasonal Salads & African Black Eyed Bean Salad	Seasonal Salads & Homemade Coleslaw
Dessert	FRUITY MONDAYS with fresh seasonal fruit	Mixed Berries & Greek Yoghurt	Rice Pudding & Peaches	Pineapple & Banana Fruit Platter	Fresh Fruit Salad
Daily Options	Bread / Fresh Fruit Platter / Organic Yoghurts / British Cheese and Crackers				

Please Note that some dishes maybe subject to local changes to suit individual school needs

Week 1 Commencing:

31 October 2022	26 December 2022	20 February 2023
14 November 2022	09 January 2023	06 March 2023
28 November 2022	23 January 2023	20 March 2023
12 December 2022	06 February 2023	03 April 2023

Week 2 Commencing:

07 November 2022	02 January 2023	27 February 2023
21 November 2022	16 January 2023	13 March 2023
06 December 2022	30 January 2023	27 March 2023
19 December 2022	13 February 2023	10 April 2023

IMPORTANT INFORMATION: Every effort is made to minimise risk of cross-contamination. However, it should be noted that our food is prepared in a kitchen where known allergens may be present and therefore the risk of cross-contamination remains a risk. Please ask staff for further details regarding specific dietary requirements and/or allergens.



Bygrove

New Lunchtime Menu

Paper copies are available from the School Office or you can download an electronic version from the school website via <https://bygrove.org.uk/wp-content/uploads/2022/11/Bygrove-Lunchtime-Menu-Oct-2022-Apr-2023.pdf>

Healthy Birthday Celebrations & Treats in School

As part of our Healthy School status and to support our families who have food allergies or intolerances, we can have healthy birthday treats when celebrating in school.

Fruits, fruit platters or fruit kebabs will be accepted.



Drugs & Alcohol: Support and Advice for Parents

Calling all parents wanting to find out about drugs and alcohol and how it affects young people then this workshop is for you.

Monday 7th November 2022

10.30am-12.30pm

Where: Online, Teams

[Click here to join the meeting](#)



**EAST LONDON MOSQUE &
LONDON MUSLIM CENTRE**

Remember to bring your PE kits to school on your PE day. You can come to school in your PE kit if you have a morning session. Just remember to bring your school uniform and shoes in a bag.

A PE kit in school colours is required. Green/black shorts or black leggings, black tracksuit bottoms and a white round neck t-shirt. Black trainers or black plimsolls.



Online Drugs workshop for Parents

An online session being hosted by Community Safety and the East London Mosque in partnership with key drugs and Alcohol agencies in Tower Hamlets

PE Days and times

Tuesday
Year 4 at 9:40am

Wednesday
Year 1 at 9:40am
Year 3 at 1:20pm

Thursday
Year 2 at 9:40am
*Year 6 Swimming (Poplar
Baths) at 11:30am
Year 6 at 2:20pm

Friday
Year 5 at 9:40am

*Swimming information

SSF DATE 2023

DATE CHANGE!

**Wednesday
29th March
2023**

A date for your diaries Year 4 parents & carers!
Next year's Year 4 Shakespeare Schools Festival
performance date is Wednesday 29th March
2023 at The Greenwich Theatre. More info soon!

Year 4 Shakespeare Schools Festival

Parents/Carers will be able to watch the Year 4 performance at The Greenwich Theatre. More information will be coming up soon!




**MILE END
STADIUM**

**ADDRESS: BURDETT ROAD, E3 4HL,
TOWER HAMLETS**

S.E.N.D
DATE: SATURDAY
1:00PM-2:00PM (8-18 YEARS)

PLEASE ENSURE YOU MAKE CONTACT PRIOR TO ATTENDING BY
EMAILING COMMUNITYSPORT@WESTHAMUNITED.CO.UK

Sessions take place at **Mile End Stadium** on **Saturdays** from
1pm-2pm, 8-18-year-olds.

Email the organiser directly before attending:
communitysport@westhamunited.co.uk

Free Premier League Kicks Sessions for SEND pupils in Tower Hamlets

There is an opportunity for young residents with SEND to access free physical activity sessions with Premier League Kicks sessions at Mile End Stadium. These sessions are delivered in partnership with West Ham United Foundation and their skilled specialist coaches offer a great way for young people to get exercise, let off steam and meet friends in a safe environment.



Bygrove
School

Nursery places available for September 2023

Would you like your child to
attend an outstanding Nursery?

Open days

Every morning from Mon 31st October 2022 to Friday 4th
November 2022, (pre booked appointments only)

Wednesday 2nd November 2022 4–5:30PM

Monday 9th January 2023 4–5:30 PM

Please contact the school office to arrange a visit to the school

call us on 02075384925 or email us at
admin@bygrove.org.uk

If your child was born between 1st September 2019
& 31st August 2020 you can apply for a Nursery
place at Bygrove Primary School online at
www.eadmissions.org.uk

Nursery open days:

Monday 9th January
2023: 4PM-5:30PM

Please contact the
school office to arrange
a visit to the school

Call us on 02075384925

or

Email us at
admin@bygrove.org.uk

If your child was born
between 1st September
2019 & 31st August 2020,
you can apply for a
Nursery place at
Bygrove Primary School
online at
www.eadmissions.org.uk

School applications are now open



Primary admissions For children born between 1 September 2018 and 31 August 2019	15 January 2023
Nursery admissions For children born between 1 September 2019 and 31 August 2020	16 February 2023

Nursery Admissions sessions Date & Time:

Friday 18th November 2022 1pm

Monday 5th December 2022 6pm

Thursday 12th January 2023 10am

Tuesday 7th February 2023 10am

Session link: <https://GR2023.eventbrite.co.uk>

Reception Admissions sessions Date & Time:

Tuesday 15th November 2022 1pm

Wednesday 7th December 2022 6pm

Friday 13th January 2023 10am

Wednesday 1st February 2023 10am

Session link: <https://GS2023.eventbrite.co.uk>

Check out information regarding Reception admissions via

<https://www.towerhamlets.gov.uk/Documents/Education-and-skills/Admissions-and-exclusions/Admissions-2022/Primary-School-prospectus.pdf>

Check out information regarding Nursery admissions via

<https://www.towerhamlets.gov.uk/Documents/Education-and-skills/Admissions-and-exclusions/Admissions-2022/Nursery-prospectus.pdf>

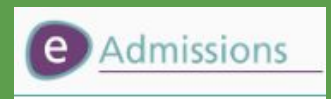
Nursery & Reception Admissions sessions & Application Deadlines

The Admissions Service LBTH team are holding virtual information sessions for parents/carers with the Transition Support Service on Reception and Nursery admissions as it is time to apply.

Nursery parents/carers must apply for a Reception place by Sunday 15th January 2023.

If you have or know someone with a child born between 1st September 2019 and 31st August 2020, you must apply for a Nursery place by Thursday 16th February 2023.

All applications must be completed via the [e-admissions portal](#).



How will I be notified about the outcome of my application?

You will receive an email and a letter on National Offer Day.



SCAN ME

Hall Hire

Price: £45 per hour
£50 deposit required at booking and only refundable after the event.

Availability: Most weekends and weekdays in the school holidays up until 10pm.

Car Park Space: 6 cars maximum.

8 double tables with benches attached and 40 chairs.
Playground use up until 8pm.

No alcohol allowed.

Please let us know if you would like to hire out the hall for birthdays, Mehndi parties, family gatherings, Eid parties and other events.

Contact Christina Maynard to arrange a viewing via admin@bygrove.org.uk or call 0207 538 4925



The
Byword